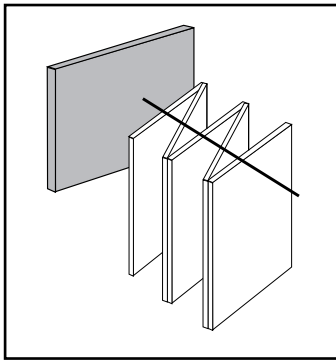


OPERABLE WALLS
Panelfold®
Moduflex®
SERIES 800
 Continuously Hinged Panels
 Model 840GWE
 Electrically Operated Gym Wall

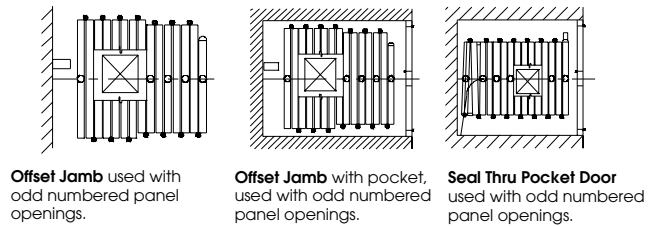
PRODUCT BRIEF



OPERATING FEATURES.
Moduflex Model 840GWE continuously-hinged, lightweight, highly impact resistant, steel faced, honeycomb core panels, top supported on alternate panels by radial type, steel ball-bearing wheels, are electrically chain driven and "center" stacked. Heights to 32' 3" (9830)

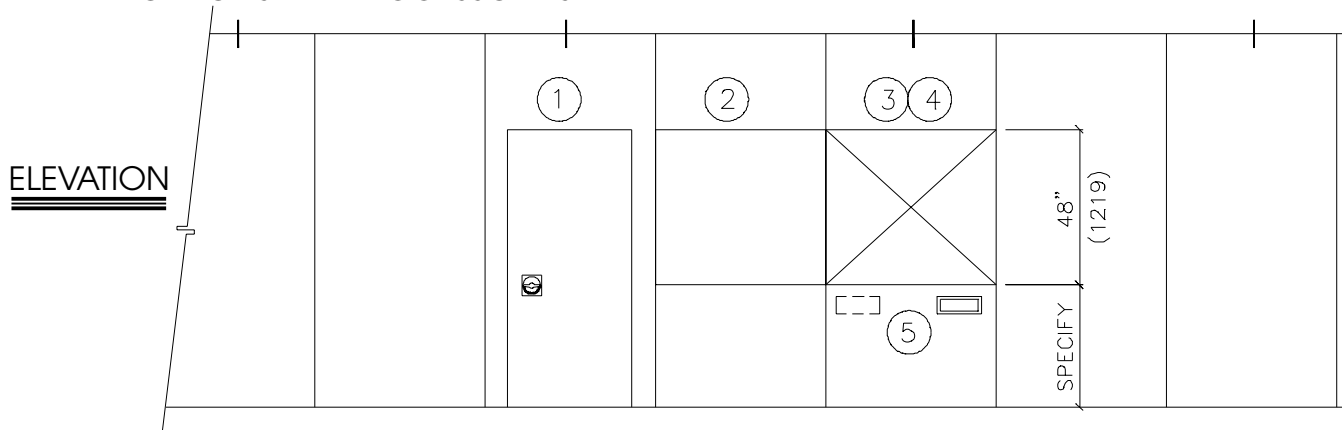
ACOUSTICAL PERFORMANCE.
Moduflex Model 840GWE operable walls have attained acoustical ratings of STC 50, STC 45 and STC 33.

TYPES OF CLOSURES
 See page 2 for details.



PANEL FINISHES. A full range of vinyl, panel fabric and wall carpet as well as Customer's Own Material may be specified.

OPTIONS AND ACCESSORIES



- ① SINGLE PASS DOORS where indicated shall be nominally (specify: 3'0" (914); or 2'8" (813)) wide by (specify: 6'8" (2032); or 7'0" (2134)) high. Doors shall be manufactured of the same materials and thickness as the panels and be equipped with butt-type hinges and positive latches with drop cup and ring pulls. Options: deadbolt locks; self illuminated exit signs; hydraulic door closers; A.D.A. compliant friction roller latch with flush pulls.
- ② TACKBOARDS where indicated shall be nominally (specify: 48" (1219)) high; or full panel height). Tackboards shall consist of 1/4" (6) cork surfaced with minimum 30oz per lineal yard Type II Fabrictex vinyl fabric (color to be selected from manufacturer's standards) and bronze trimmed.

- ③ CHALKBOARDS where indicated shall be nominally (specify: 48" (1219) high; or full panel height). Chalkboards shall be chalkable porcelain enameled steel (color to be selected from manufacturer's standards) and bronze trimmed.
- ④ MARKERBOARDS where indicated shall be nominally (specify: 48" (1219) high; or full panel height) and be of suitable non-porous surfaced porcelain enameled steel for application of write-on, wipe-off marker pens. Color of markerboards to be selected from manufacturer's standards and bronze trimmed.
- ⑤ RECESSED TRAY for storing chalk or marking pens and erasers shall be installed where indicated and shall be bronze color.

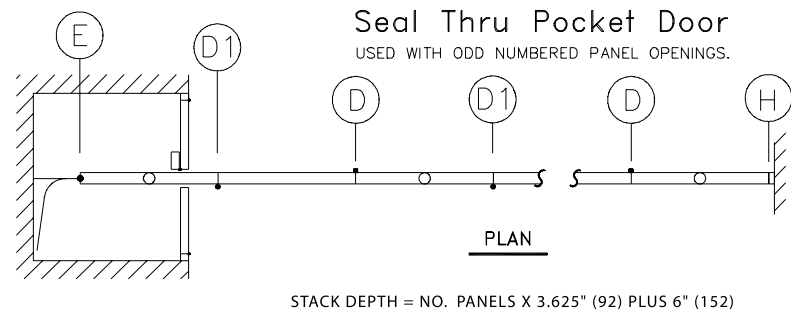
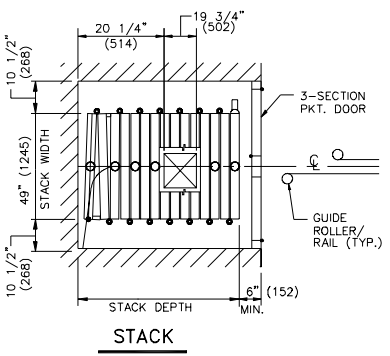
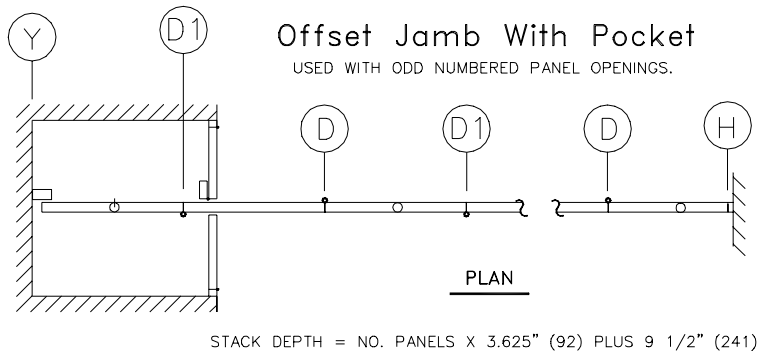
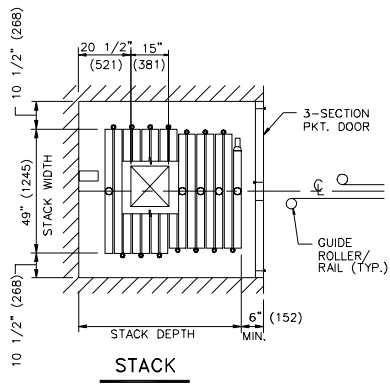
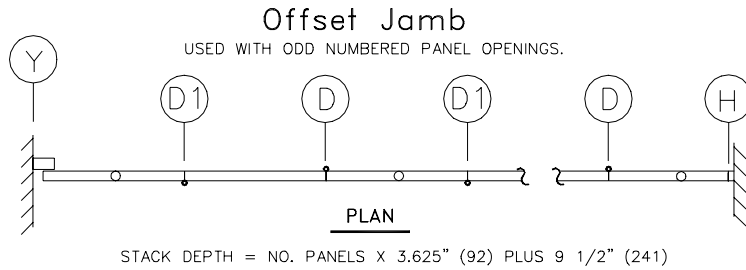
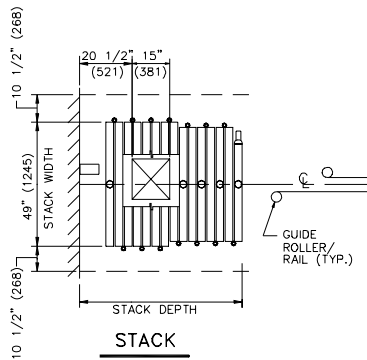
FURTHER INFORMATION. All dimensions shown in parentheses are millimeters. **Moduflex Model 840GWE** operable walls have three inch welded steel panels for high performance demanding applications and are supplied with self compensating type bottom seal mechanisms. Scale N.T.S.



Moduflex® SERIES 800

Continuously-Hinged Panels Model 840GWE Electrically Operated Gym Wall

TYPES OF CLOSURES AND PANEL STACKING



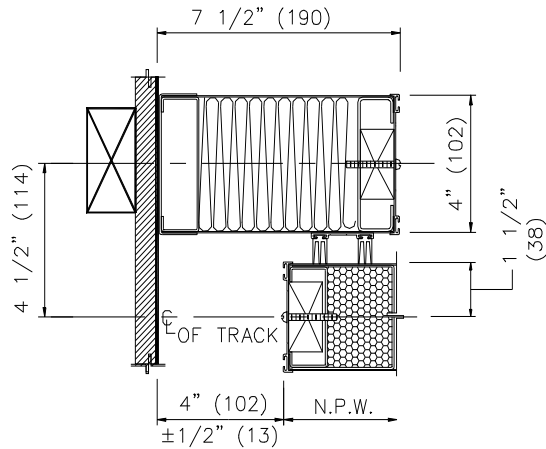


Moduflex® SERIES 800

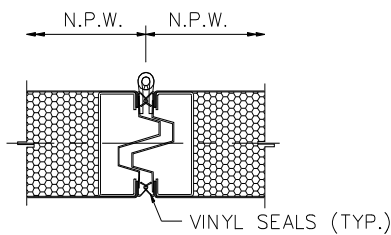
Continuously-Hinged Panels Model 840GWE Electrically Operated Gym Wall

JAMBS AND PANEL INTERLOCKING DETAILS

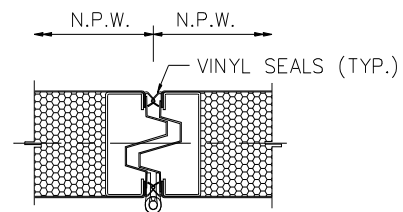
N.P.W. = NOMINAL PANEL WIDTH



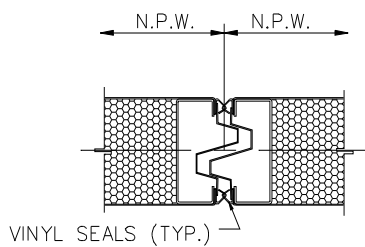
Y OFFSET JAMB



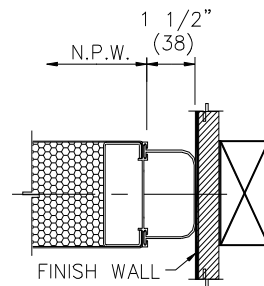
D HINGED INTERLOCK



D1 HINGED INTERLOCK



E INTERLOCK



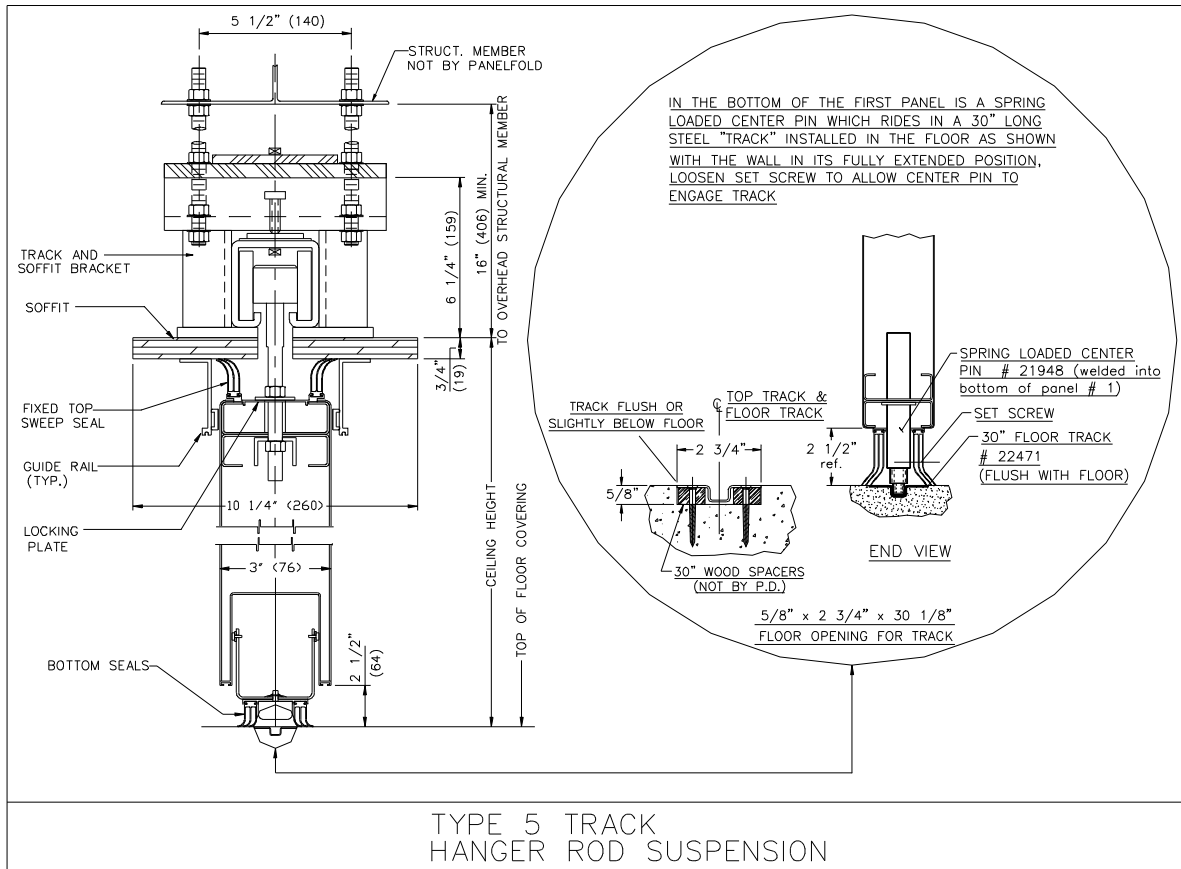
H SOFT SEAL



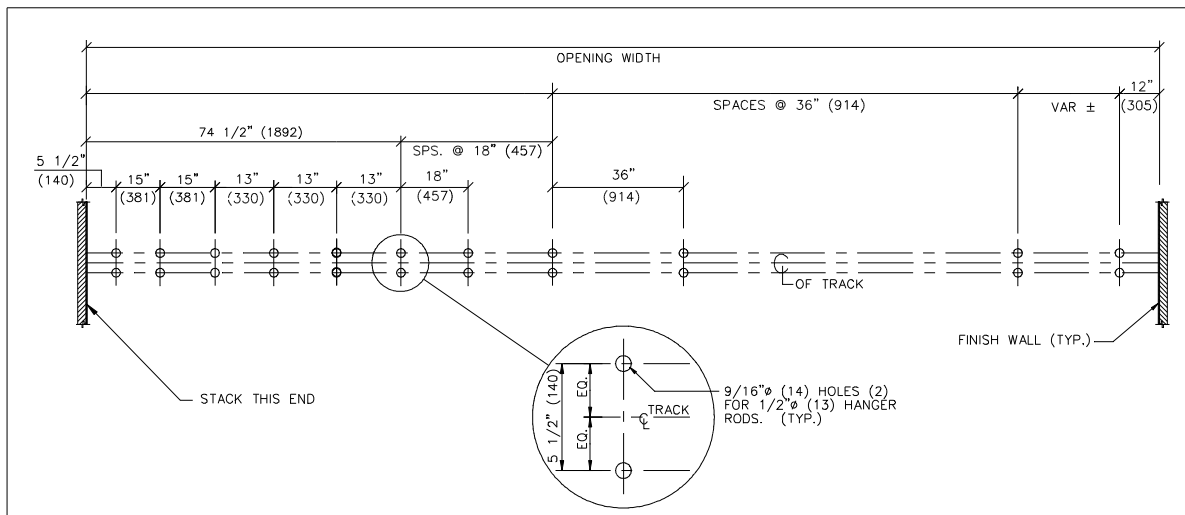
Moduflex® SERIES 800

Continuously-Hinged Panels Model 840GWE Electrically Operated Gym Wall

VERTICAL SECTION - HEAD DETAILS - OFF SET JAMBS



PUNCHING TEMPLATE



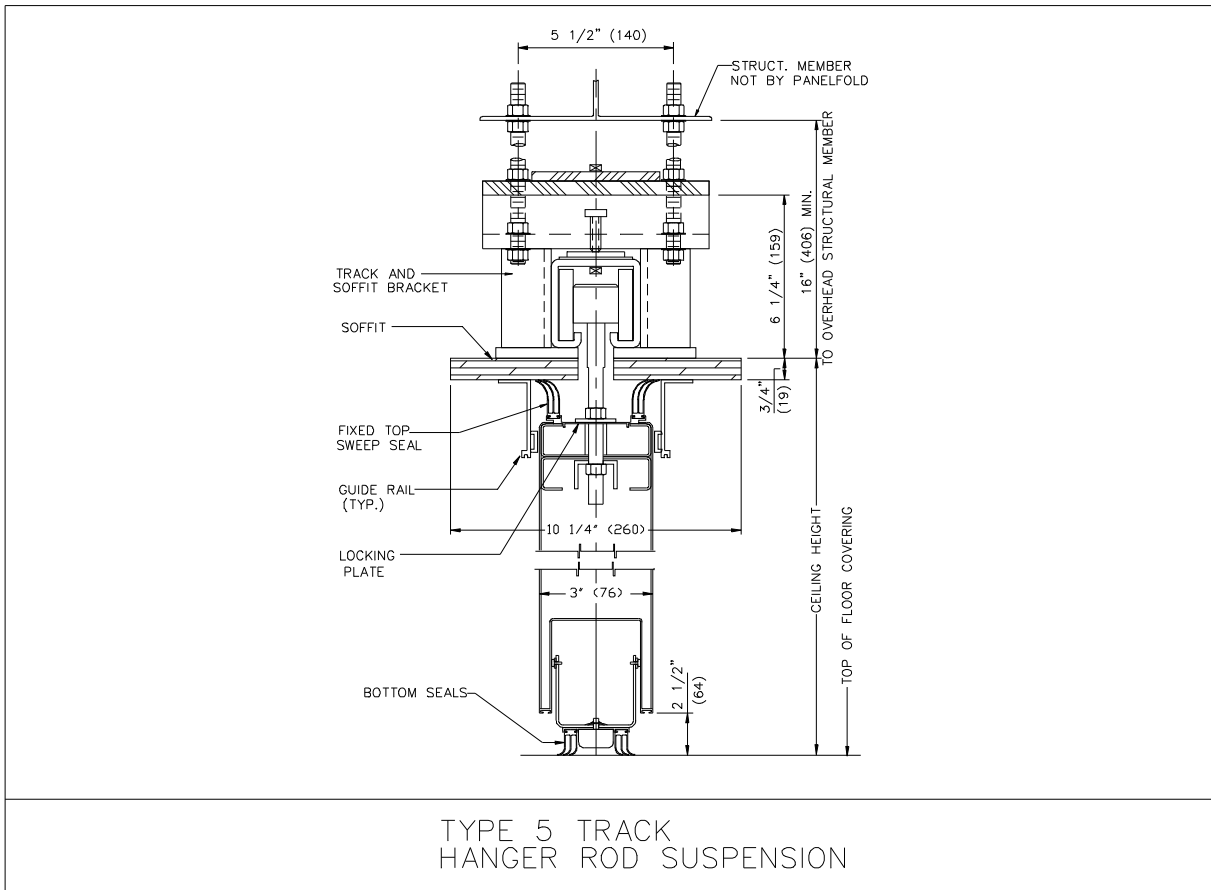
All dimensions shown in parentheses are millimeters. Scale: N.T.S.



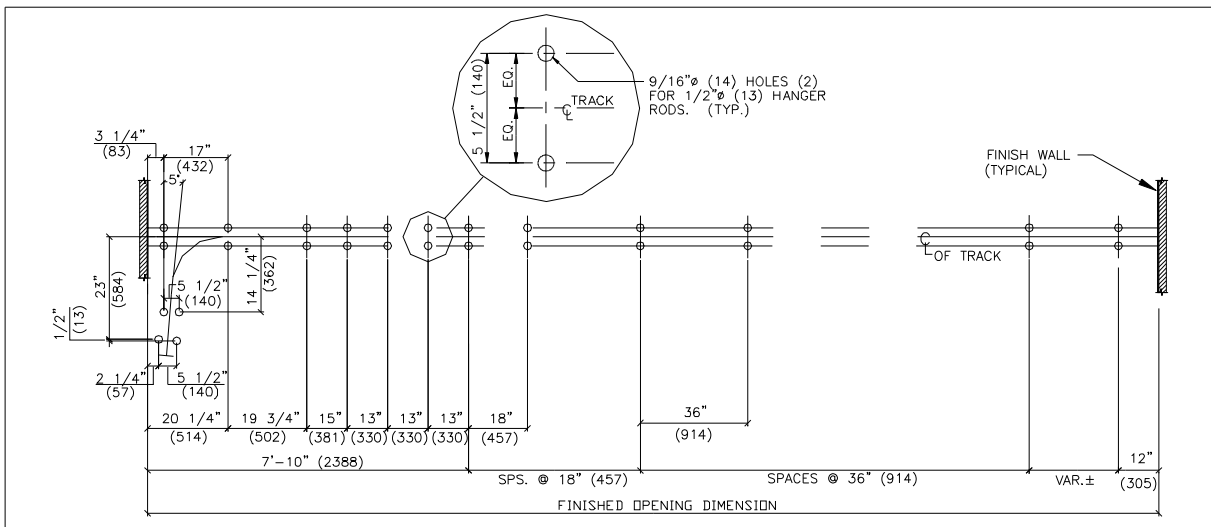
Moduflex® SERIES 800

Continuously-Hinged Panels Model 840GWE Electrically Operated Gym Wall

VERTICAL SECTION - HEAD DETAILS - SEAL THRU POCKET DOORS



PUNCHING TEMPLATE FOR SEAL THRU POCKET DOOR



All dimensions shown in parentheses are millimeters. Scale: N.T.S.

Moduflex® SERIES 800

Continuously-Hinged Panels Model 840GWE Electrically Operated Gym Wall

PRODUCT SPECIFICATIONS: SECTION 10650 - OPERABLE WALLS

PART 1 GENERAL

(See Project Guide Specifications for Scope, Related Work, References, Submittals, Product Delivery and Acceptable Manufacturers paragraphs.)

PART 2 PRODUCTS

2.1 OPERABLE WALLS shall be manufactured by Panelfold, Inc., Miami, Florida, U.S.A. and installed by an authorized representative of the manufacturer in openings prepared by others to Moduflex® Model 840GWE requirements.

2.2 OPERATION shall consist of a series of electrically operated flat panels, top supported. Top and bottom seals shall be as specified in paragraph 2.8.

2.3 PANEL CONFIGURATION shall be as follows for areas indicated on the plans:

2.3.1 MODEL 840GWE shall be comprised of a series of continuously-hinged panels, center stacking, electrically operated.

2.3.2 Final closure shall be effected by Offset Jamb.

2.4 PANELS shall be 3" (76) thick, one piece, all steel construction with lightweight, impact resistant honeycomb core. Continuous steel panel faces shall be invisibly welded to minimum 16 gauge (1.62) one-piece steel frames. Horizontal or vertical spliced frames or faces shall not be permitted. Interlocking vertical panel edges shall be made of steel.

The vertical edges of the panels shall not require trim thus minimizing the appearance of the vertical joining of the Sheer-Look® panels

2.5 PANELS shall be factory surfaced with one of the following (colors to be selected from manufacturer's standards):

2.5.1 Manufacturer's standard vinyl, Class A flame spread (specify: Type I; or Type II).

2.5.2 Manufacturer's standard Ribtex® Basic, vertical-rib wall carpeting, Class A.

2.5.3 Manufacturer's Woventex® panel fabric, Class A, acrylic latex backed.

2.5.4 Maharam Tekwall panel fabric, Class A, acrylic backed.

2.5.5 Customer's Own Material to be factory applied (subject to approval by the manu-

facturer for suitability to standard manufacturing processes and equipment).

2.5.6 Coated steel panel faces for field surfacing by others.

2.6 HANGING WEIGHT of panels shall not exceed 8.2 lbs/ft² (40 kg/m²).

2.7 ACOUSTICAL RATING of panels as tested by an independent acoustical laboratory in accordance with ASTM E90-85 test procedures shall be (specify: STC 50, STC 45 or STC 33).

2.8 SOUND SEALS shall be as follows:

2.8.1 Vertical seals between panels shall consist of deep nesting, universal interlocking ESP bronze steel astragals incorporating continuous vinyl acoustical seals. Vertical astragal vinyl seals shall be installed on the outboard edges of the panel skins in a double row with an acoustical labyrinth.

2.8.2 Horizontal TOP seals shall be continuous contact extruded vinyl shapes.

2.8.3 Horizontal BOTTOM seals shall be 2-1/2" (64mm) self compensating mechanisms.

2.9 SUSPENSION SYSTEM shall be steel Type 5 track. Track hanger brackets shall be supported by adjustable steel hanger rods. Alternate panels shall be supported by trolley assemblies of steel radial type ball-bearing wheels. Trolleys shall be attached to the panels with adjustable steel pendant bolts with locks to prevent panel misalignment.

2.10 PANELS shall be hinged with manufacturer's standard butt-type hinges.

2.11 POCKET DOORS where indicated on the plans shall be manufactured of the same materials as the panels. Hinges shall be standard butt-type.

PART 3 EXECUTION

(See Project Specifications Guide for Execution, Installation, Cleaning and Demonstration paragraphs).

NOTE: The ASTM - 84 procedure Class A flame spread and other test results referenced herein are for comparison purposes only and are not intended to reflect hazards presented by this or any other materials under actual fire conditions.

For further information, or additional technical information, contact your Panelfold distributor.

Panelfold®

FOLDING DOORS • ACOUSTICAL FOLDING PARTITIONS • ACOUSTICAL PANELS
 OPERABLE WALLS • RELOCATABLE WALLS

Panelfold, Inc. P.O. Box 680130, Miami, Florida 33168
 (305) 688-3501 • FAX: (305) 688-0185
 Internet: www.panelfold.com • E-mail: sales@panelfold.com