

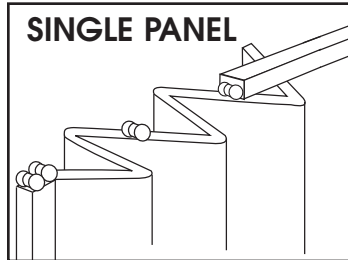
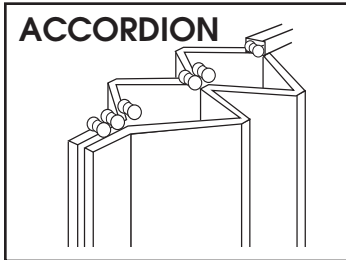
SPECIAL ACCESSORIES
FOLDING PARTITIONS

Panelfold®

Scale®
Sonicwal®
Fabricwal®

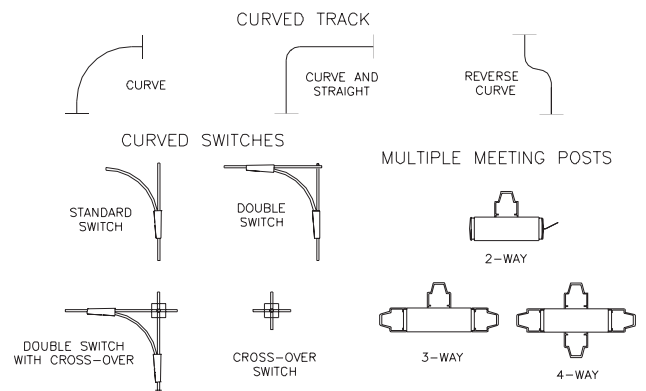
FEATURES

These special accessories may be specified to allow Panelfold partitions to accommodate many alternative room layouts and storage options for multi-purpose uses. Partitions using curved switches must have Double End Posts. Curved track and switches may be ordered for surface mounted track with track mould or Ceilingguard head trim or recessed track with sub-channel.

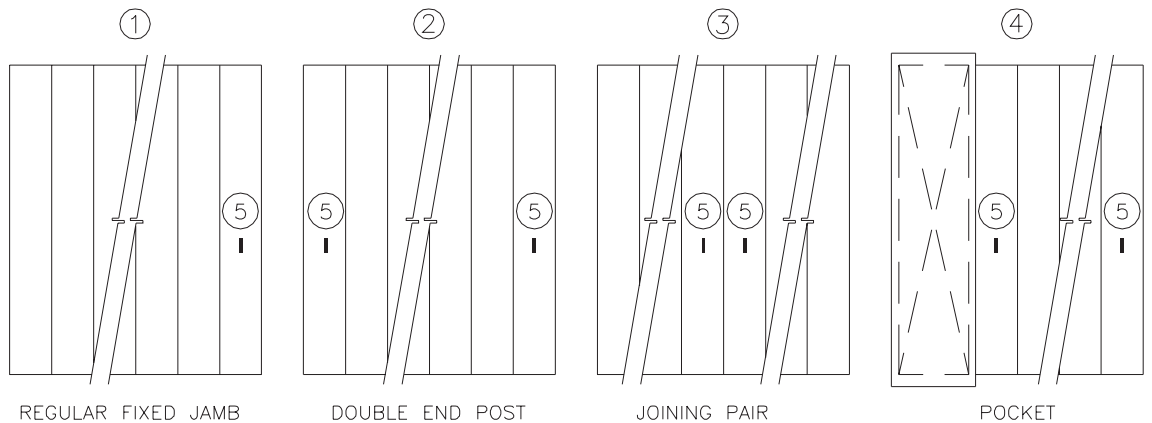


TYPES OF APPLICATIONS

See pages 2 & 3 for details.



ELEVATIONS



APPLICATIONS DESCRIPTIONS

See page 4 for Product Specifications

- ① REGULAR FIXED-JAMB partitions may be used with 2-Way, 3-Way or 4-Way multiple meeting posts and with curved track. Not available with switches. Please see note 3.
- ② DOUBLE END POST partitions may be latched at both jambs and may be used with Regular Fixed Jamb Partitions as well as other Double End Post partitions together with multiple meeting posts, with curved track and with switches. Double End Post partitions must be used with curved switches.
- ③ JOINING PAIR OF FIXED-JAMB partitions may be permanently attached at both jambs and may be used together with multiple meeting posts and with curved track.
- ④ POCKET RECESSED partitions may be supplied with a Double End Post or a Sliding Jamb for single openings or for joining pairs of partitions.
- ⑤ SECURITY FEATURES may be installed to prevent opening of the partitions with keyed cylinders (standard or optionally master-keyed), privacy turns or emergency (coin-slot) releases.

FURTHER INFORMATION. All dimensions shown in parentheses are millimeters. Scale N.T.S.



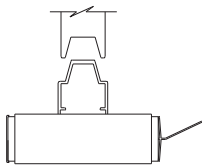
Scale® • Sonicwal® • Fabricwal®

Special Accessories Folding Partitions

APPLICATIONS DETAILS

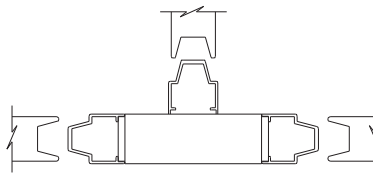
MULTIPLE MEETING POSTS

2-WAY



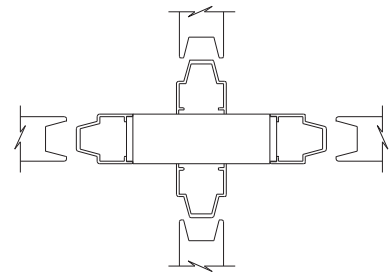
Permanently fixed to one partition, allows two partitions to join at right angle. Right hand shown. Left hand available.

3-WAY



Travels with either of two partitions. Allows any two or three partitions to join at right angles.

4-WAY

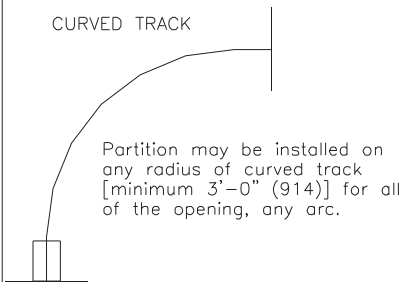


Travels with either of two partitions. Allows any two, three or four partitions to join at right angles.

CURVED TRACK

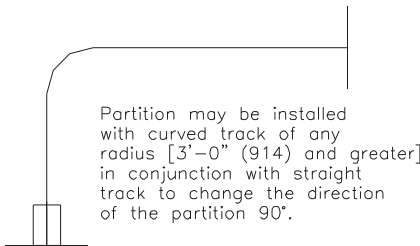
MINIMUM RADIUS 3'-0" (914) TYPICAL

CURVED TRACK



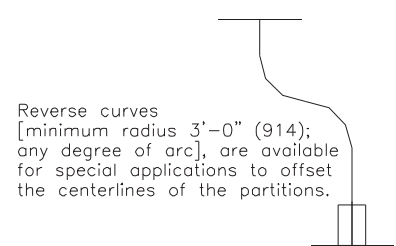
Partition may be installed on any radius of curved track [minimum 3'-0" (914)] for all of the opening, any arc.

CURVED AND STRAIGHT TRACK



Partition may be installed with curved track of any radius [3'-0" (914) and greater] in conjunction with straight track to change the direction of the partition 90°.

REVERSE CURVED TRACK



Reverse curves [minimum radius 3'-0" (914); any degree of arc], are available for special applications to offset the centerlines of the partitions.

CURVED SWITCHES

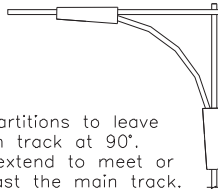
RADIUS FOR ALL SWITCHES IS 3'-0" (914). ALL PARTITIONS MUST BE DOUBLE END POST.

STANDARD SWITCH



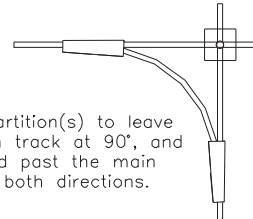
Allows partition(s) to leave the main track at 90°. Left hand shown. Right hand available.

DOUBLE SWITCH



Allows partitions to leave the main track at 90° and to extend to meet or travel past the main track.

DOUBLE SWITCH WITH CROSS-OVER



Allows partition(s) to leave the main track at 90°, and to extend past the main track in both directions.

CROSS-OVER SWITCH



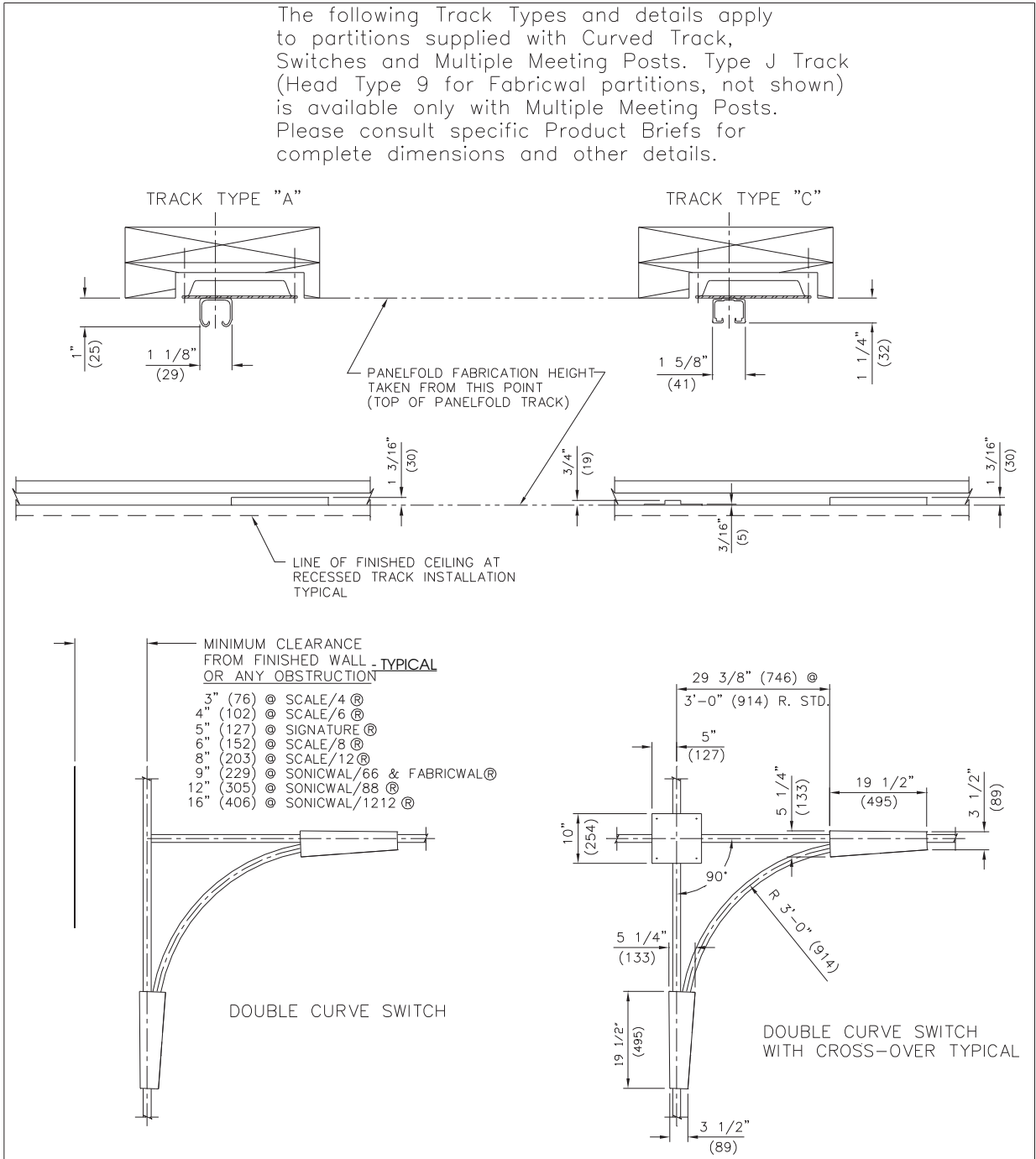
Allows partition(s) to cross the main track at 90°.



Scale® • Sonicwal® • Fabricwal®
 Special Accessories Folding Partitions

APPLICATIONS DETAILS

The following Track Types and details apply to partitions supplied with Curved Track, Switches and Multiple Meeting Posts. Type J Track (Head Type 9 for Fabricwal partitions, not shown) is available only with Multiple Meeting Posts. Please consult specific Product Briefs for complete dimensions and other details.



All dimensions shown in parentheses are millimeters. Scale: N.T.S.

Scale® • Sonicwal® • Fabricwal®

PRODUCT SPECIFICATIONS: SECTION 10650 SPECIAL ACCESSORIES FOR FOLDING PARTITIONS

PART 1 GENERAL

(See Project Guide Specifications for Scope, Related Work, References, Submittals, Product Delivery and Acceptable Manufacturers paragraphs.)

2.3 TRIM: Curved track and/or curved switches shall be supplied with (specify: track mould or Ceilingguard to conceal track; or optional extruded aluminum sub-channel for recessed track).

PART 2 PRODUCTS

2.1 SPECIAL ACCESSORIES shall be as manufactured by Panelfold, Inc., Miami, Florida, U.S.A. and installed by an authorized representative of the manufacturer in openings prepared by others to Panelfold folding partitions requirements.

2.2 SPECIAL ACCESSORIES shall be furnished and installed as follows to provide multiple purpose uses as shown on the plans:

2.2.1 Meeting Post, 2-Way

2.2.2 Meeting Post, 3-Way

2.2.3 Meeting Post, 4-Way

2.2.4 Curved Track

2.2.5 Standard Curved Switch

2.2.6 Double Curved Switch

2.2.7 Double Curved Switch with Cross-Over

2.2.8 Cross-Over Switch

PART 3 EXECUTION

(See Project Specifications Guide for Execution, Inspection, Preparation, Installation, Cleaning and Demonstration paragraphs.)

For further information, or additional technical information, contact your Panelfold distributor.

Panelfold®

FOLDING DOORS • ACOUSTICAL FOLDING PARTITIONS
OPERABLE WALLS • RELOCATABLE WALLS

Panelfold, Inc. P.O. Box 680130, Miami, Florida 33168
(305) 688-3501 • FAX: (305) 688-0185