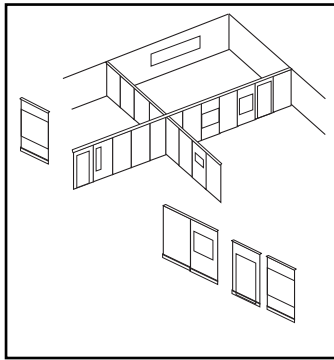


RELOCATABLE WALLS
Panelfold[®]
Prime Spacer[®]
 SERIES 300
 Model 350
 Self-Contained
 Panels
 Model 360
 Factory
 Assembled
 Panels

PRODUCT BRIEF

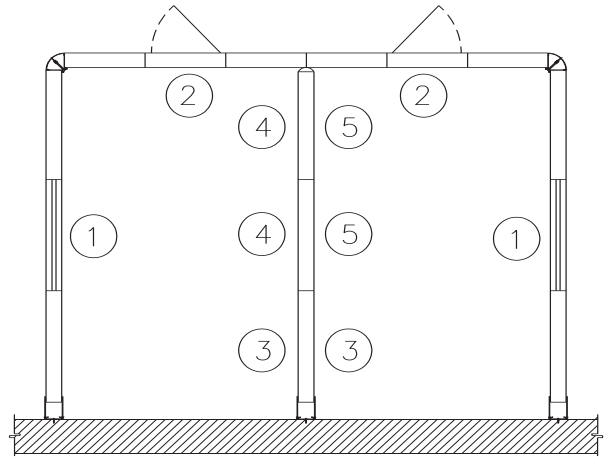


OPERATING FEATURES. PrimeSpacer Model 350 and Model 360 portable, floor supported panels install quickly between ceilings and floors without permanent attachments and relocate without loss of material. Heights to 12'0" (3658).

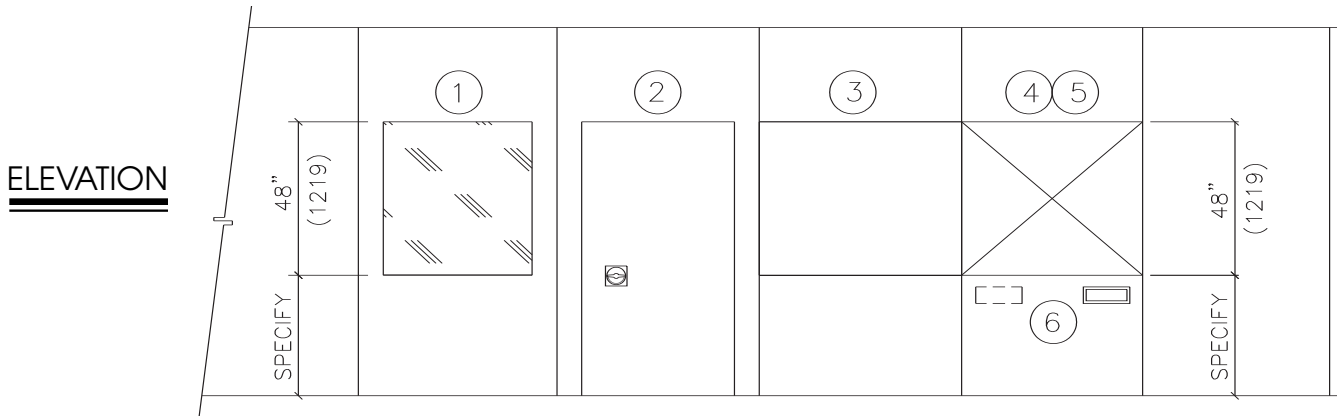
ACOUSTICAL PERFORMANCE. PrimeSpacer Series 300 relocatable walls have attained acoustical ratings of STC 42 and STC 38.

PANEL FINISHES. A full range of vinyl, panel fabric, wood veneers, plastic laminate and wall carpet as well as

TYPES OF APPLICATIONS
 See page 2 for details.



OPTIONS AND ACCESSORIES



OPTIONS SPECIFICATIONS
 (See page 4 for Product Specifications)

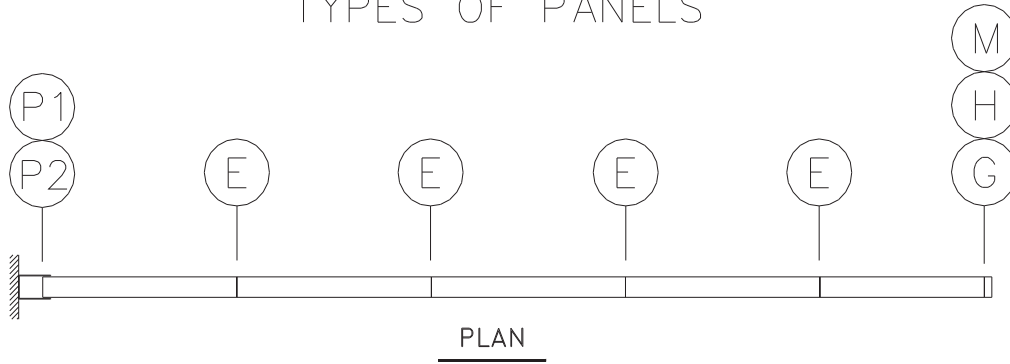
- ① WINDOWS where indicated on the plans shall be nominally (specify: 48" (1219) high; or full panel height). Windows shall be (specify: factory glazed with 1/4" (6) clear acrylic; or unglazed, framed opening only). Windows shall be bronze trimmed.
- ② SINGLE PASS DOORS where indicated shall be nominally (specify: 30" (914); or 28" (813)) wide by (specify: 68" (2032); or 70" (2134)) high. Doors shall be manufactured of the same materials and thickness as the panels and be equipped with butt-type hinges and positive latches with drop cup and ring pulls. OPTIONS: deadbolt locks; self illuminated exit signs; hydraulic door closers; ADA compliant friction roller latch with flush pulls.
- ③ TACKBOARDS where indicated shall be nominally (specify: 48" (1219)) high; or full panel height). Tackboards shall consist of 1/4" (6) cork surfaced with minimum 30oz per lineal yard Type II Fabrictex vinyl fabric (color to be selected from manufacturer's standards) and bronze trimmed.
- ④ CHALKBOARDS where indicated shall be nominally (specify: 48" (1219) high; or full panel height). Chalkboards shall be chalkable porcelain enameled steel (color to be selected from manufacturer's standards) and bronze trimmed.
- ⑤ MARKERBOARDS where indicated shall be nominally (specify: 48" (1219) high; or full panel height) and be of suitable non-porous surfaced porcelain enameled steel for application of write-on, wipe-off marker pens. Color of markerboards to be selected from manufacturer's standards and bronze trimmed.
- ⑥ RECESSED TRAY for storing chalk or marking pens and erasers shall be installed where indicated and shall be bronze color.

FURTHER INFORMATION. All dimensions shown in parentheses are millimeters. PrimeSpacer[®] relocatable walls have three inch thick panels for general purpose applications. Scale N.T.S.

PrimeSpacer® SERIES 300

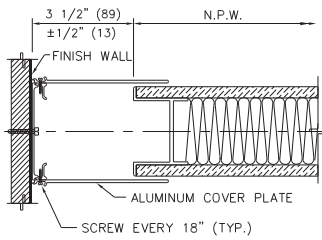
Self-Contained Panels Model 350
 Factory Assembled Panels Model 360

TYPES OF PANELS

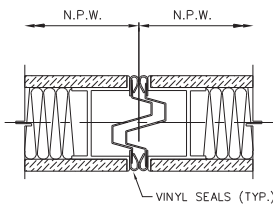


JAMBS AND PANEL INTERLOCKING DETAILS

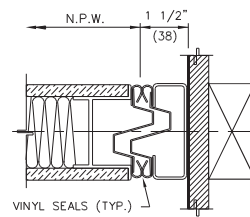
N.P.W. = NOMINAL PANEL WIDTH



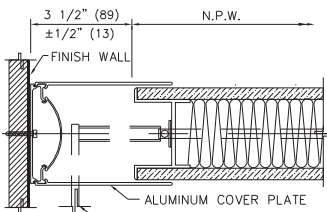
(P1) MODEL 360
JAMB CLOSURE



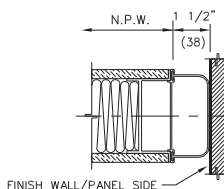
(E) INTERLOCK



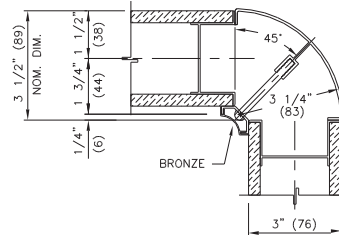
(G) LEAD JAMB



(P2) MODEL 350
JAMB CLOSURE



(H) SOFT SEAL



(M) CORNER POST

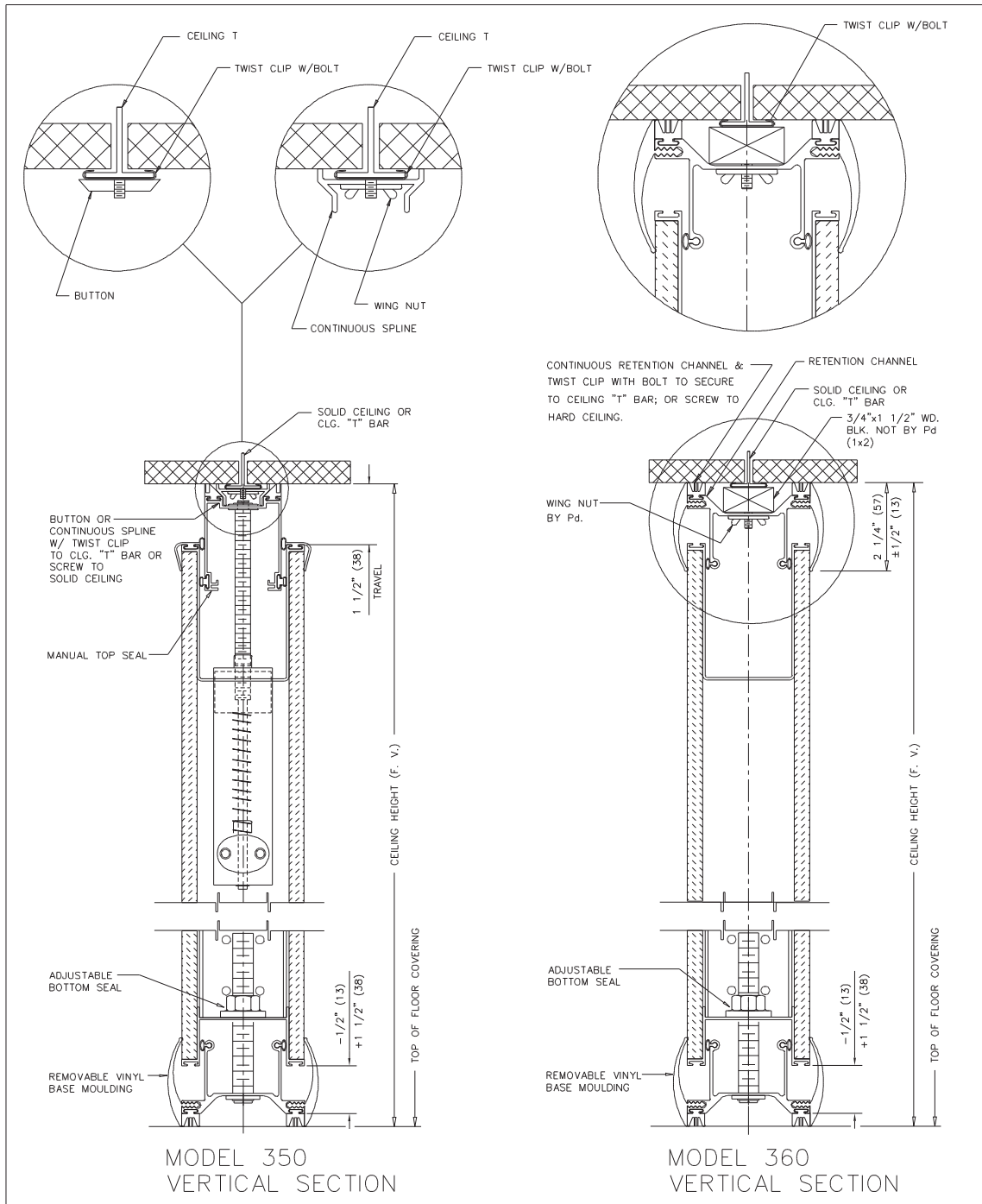
All dimensions shown in parentheses are millimeters. Scale: N.T.S.

PrimeSpacer® SERIES 300

Self-Contained Panels Model 350

Factory Assembled Panels Model 360

VERTICAL SECTION - HEAD DETAILS



All dimensions shown in parentheses are millimeters. Scale: N.T.S.

PrimeSpacer® SERIES 300

Self-Contained Panels Model 350

Factory Assembled Panels Model 360

PRODUCT SPECIFICATIONS: SECTION 10615 - RELOCATABLE WALLS

PART 1 GENERAL

(See Project Guide Specifications for Scope, Related Work, References, Submittals, Product Delivery and Acceptable Manufacturers paragraphs.)

PART 2 PRODUCTS

2.1 RELOCATABLE WALLS shall be manufactured by Panelfold, Inc., Miami, Florida, U.S.A. and installed by an authorized representative of the manufacturer in openings prepared by others to PrimeSpacer® Series 300 requirements.

2.2 OPERATION shall consist of a series of floor supported portable panels.

2.3 PANEL CONFIGURATION shall be as follows for areas indicated on the plans:

2.3.1 MODEL 350 shall be comprised of a series of self-contained panels with top spring-bias mechanisms which engage the panels against the ceiling.

2.3.2 MODEL 360 shall be comprised of a series of factory-assembled panels which are retained at the ceiling by continuous splines.

2.4 PANELS shall be 3" (76) thick and nominally 49" (1245) wide. Panel faces shall be laminated to metal frames. Panels shall have appropriate internal insulation to achieve specified STC. The tops of the panels shall be reinforced to support suspension components.

The vertical edges of the panels shall not require trim thus minimizing the appearance of the vertical joining of the Sheer-Look® panels.

2.5 PANELS shall be factory surfaced with one of the following (colors to be selected from manufacturer's standards):

2.5.1 Manufacturer's standard vinyl, Class A flame spread (specify: Type I; or Type II).

2.5.2 Manufacturer's standard Ribtex®, vertical-rib wall carpeting, Class A, minimum weight 33 oz. per lineal yard, latex-backed.

2.5.3 Manufacturer's Woventex® panel fabric, Class A, acrylic latex backed.

2.5.4 Maharam Tekwall 1000 panel fabric, Class A, acrylic backed.

2.5.5 Genuine unfinished wood veneer shall be (specify: White Ash, Red Oak, Natural Birch, American Walnut or other species as specified).

2.5.6 High pressure plastic laminate, vertical grade.

2.5.7 Customer's Own Material to be factory applied (subject to approval by the manufacturer for suitability to standard manufacturing processes and equipment).

2.5.8 Unsurfaced panel skins for field finishing by others.

2.6 HANGING WEIGHT of panels shall not exceed 6 lbs./ft² (29.8Kg/m²).

2.7 ACOUSTICAL RATING of panels as tested by an independent acoustical laboratory in accordance with ASTM E90-85 test procedures shall be (specify: STC 42; or STC 38).

2.8 SOUND SEALS shall be as follows:

2.8.1. Vertical seals between panels shall consist of deep nesting, universal interlocking ESP bronze steel astragals incorporating continuous vinyl acoustical seals. Vertical astragal vinyl seals shall be installed on the outboard edges of the panel skins in a double row with an acoustical labyrinth.

2.8.2 Horizontal TOP seals shall be continuous contact extruded vinyl shapes.

2.8.3 Horizontal BOTTOM seals shall be continuous contact extruded vinyl shapes.

PART 3 EXECUTION

(See Project Specifications Guide for Execution, Installation, Cleaning and Demonstration paragraphs).

NOTE: The ASTM -84 procedure Class A flame spread and other test results referenced herein are for comparison purposes only and are not intended to reflect hazards presented by this or any other materials under actual fire conditions.

Panelfold products are manufactured and sold under Panelfold®, Moduflex®, Startex™, Fabricitex®, Ropetex®, Sofftex™, Woodtex®, Ribtex®, Woventex®, Sheer Look®, Autoseal™ and Manuseal™ trademarks and U.S. and Canadian patents worldwide. All dimensions shown in parentheses are millimeters. Panelfold is constantly developing its products and reserves the right to change specifications and materials without notice. Copyright © 1997-1999 by Panelfold, Inc. All rights reserved. SA 492.01/02

For further information, or additional technical information, contact your Panelfold distributor.

Panelfold®

FOLDING DOORS • ACOUSTICAL FOLDING PARTITIONS
OPERABLE WALLS • RELOCATABLE WALLS

Panelfold, Inc. P.O. Box 680130, Miami, Florida 33168
(305) 688-3501 • FAX: (305) 688-0185