



Operation and Maintenance Manual  
**Moduflex<sup>®</sup> High Performance Operable Walls**

This manual provides important safety, operation and maintenance information for your Panelfold Moduflex operable wall(s). These systems have been custom manufactured to give you years of un-interrupted service.

Should you wish scheduled or periodic service, please consult your local Panelfold authorized installing distributor. If you ever need factory assistance, please refer to the following information when contacting Panelfold:












Panelfold Order No: \_\_\_\_\_  
Project Name: \_\_\_\_\_  
Project City: \_\_\_\_\_ Project State: \_\_\_\_\_

Moduflex Model(s): 1. \_\_\_\_\_ STC: \_\_\_\_\_  
2. \_\_\_\_\_ STC: \_\_\_\_\_  
3. \_\_\_\_\_ STC: \_\_\_\_\_

Panelfold, Inc.      • Mailing: P.O. Box 680130, Miami, Florida, 33168  
• Shipping: 10700 NW 36th Ave, Miami, Florida, 33167  
• Phone: 305-688-3501  
• Fax: 305-688-0185  
• E-mail: sales@panelfold.com  
• Web Site: www.panelfold.com




Thank you for selecting Panelfold products.


**Rules For Safe Operation - Electrically Operated Walls**


-  1. Do not attempt to operate Panelfold operable walls until you have read thoroughly and understand completely all instructions, safety rules, etc. contained in this manual. Failure to comply can result in accidents involving serious personal injury. Save this manual and review it frequently for continuing safe operation and for instructing others who may operate the operable walls.
-  2. SAFETY MANDATE: For safety reasons it is mandatory that two trained staff members be present at all times while the partition is in motion.
-  3. Before operating electric walls, make sure the path of travel as well as the stack area is clear from any obstructions and that there are no persons, other than the two trained key control operators, anywhere in the vicinity of the wall that is to be moved.
-  4. While operating electric walls, both of the persons manning the key control stations should constantly and attentively keep on the lookout for any approaching obstacles or persons. If someone approaches, let go of the spring-loaded key immediately so that the wall will stop moving. Do not re-start operation until all persons are safely out of the way.
-  5. Before returning the electric wall to its storage area (storage closet), inspect the interior of the area (pocket) to be sure that nothing has been stored in the vacant area (pocket) and that there is no one in the area (pocket) that could be hit or trapped by the panels.
-  6. Before closing and/or locking pocket doors, if any, be sure that there is no one in the pocket.
-  7. If the electric wall has stopped at an intermediate point between being fully opened or fully closed, try to avoid moving by hand the panels that have not yet been aligned by the guide rollers/guide rail since doing so could unset the natural folding geometry of the panels, resulting in possible damage to the partition, track, soffit and/or mechanical parts such as chain, guide rollers, etc.
-  8. Never leave the keys in the control stations. Secure them in a safe location.
-  9. Never tamper with the electric control boxes. Breaking the tamper-proof seal will void the factory warranty. If service is required, please contact your local Panelfold authorized servicing distributor.
-  10. Electrically operated walls typically are suspended from trolleys located on alternating panels. Each trolley is attached to the panel by a threaded suspension bolt that is fitted with a locking plate. LOCKING PLATES MUST NEVER BE REMOVED, except by an authorized Panelfold service technician, and, then, only momentarily while adjusting the elevation or plumb of a panel. Moving a panel with a locking plate removed may result in the suspension bolt unthreading from the panel causing the panel to fall.
-  11. Never try to circumvent the proper operating techniques and safety practices described herein.


**“Sound” Set Up Practices - Electrically Operated Walls**

Panelfold operable walls are engineered to provide a high degree of sound isolation between adjacent function rooms. Since even small leaks will undermine the acoustical performance of the partitions, it is important to use “sound practices” every time that each wall is “set up.” Below is a summary of key practices.

-  1. Check to be sure that the adjacent panels are vertically aligned with each other along their entire vertical edges. Generally, no more than a 1/2” gap should be present between the hard edges of adjacent panels. The flexible vertical seals should be touching one another tightly from top to bottom.
-  2. While setting up a wall to seal through the slot in a pocket door, if any, be sure to close both pocket doors and both slot closers tightly against the panel faces.
-  3. When setting up an electric wall, allow the wall to fully extend until the integrated Travel Limiter automatically stops the wall.

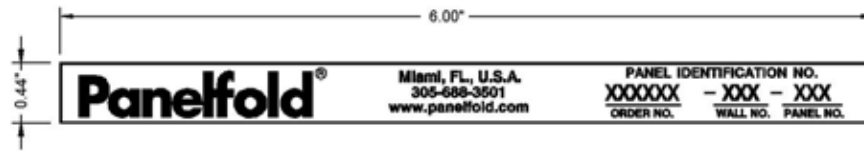
 NOTE: A good way to check for sound leaks is to check for light leaks. After an operable wall has been set up completely, turn on the lights in a room on one side of the operable wall, turn off the lights in the room on the other side of the operable wall and, standing in the darkened room, look for light leaks. If the light leaks persist, contact your Panelfold authorized distributor for servicing.

 NOTE: At the time that the operable walls were installed, the trolley suspension bolts on each panel were adjusted so that the panel was hanging vertically plumb. Over time, due to live loading and differential settling of the building, the operable wall tracks may move causing panels to hang slightly out of plumb and may possibly require readjustment of the panels. In this case, contact your Panelfold authorized distributor. Never attempt to adjust the trolley suspension bolts yourself. Refer to caution 10 in the section, “Rules For Safe Operation.”

 NOTE: Panelfold offers a wide array of optional SafetyFlex™ infrared, pressure-sensitive and other safety devices designed to further enhance safe operation of electrically operated walls. All existing Panelfold electric walls can be retrofitted with these SafetyFlex™ safety devices if they were not specified/ordered at the time of the original wall installation.

**Panel Identification No. (PIN)**

Each Panelfold operable wall panel has its own, unique, panel identification no. (PIN) that is printed on a label, as shown in the figure below, which is adhered to the trail edge of the panel.



PANEL IDENTIFICATION LABEL

When calling for service to specific panels, please be prepared to give the panel identification no. of each panel that requires service.

As shown in the figure above, the PIN consists of three parts:

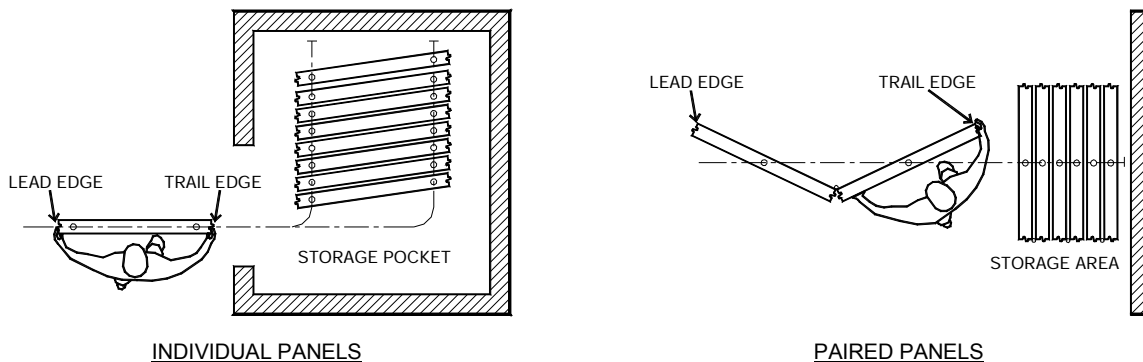
- Panelfold Order No. – This is Panelfold’s record number applicable to your project.
- Wall No. – This alpha-designation is different for each partition opening, and corresponds to the “Panelfold Wall Mark” as listed on the Panelfold “as built” shop drawings for the project.
- Panel No. – This number is different for each panel within a wall. Panel No.1 is the panel closest to the storage area/pocket (first to enter the storage area/pocket), and the other panels are numbered in ascending sequential order in a direction away from the storage area/pocket.

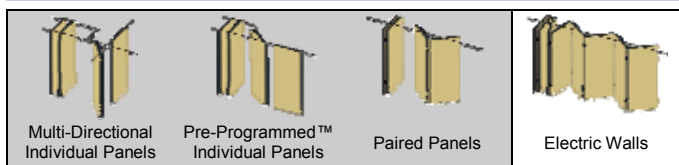
In the event that any panel identification label has been removed from its panel, a replacement label may be obtained by contacting Panelfold or your Panelfold distributor.

For the convenience of authorized service personnel working on the track or wheel carriers, each panel identification no. is also printed on a label adhered to the top of the panel. This label can be viewed by using a lift to get up to the track level and then looking down at the top end of the panel.

**Lead and Trail Edges Defined**

Each Panelfold operable wall panel has a designated lead edge and trail edge. As shown in the figures below, the lead edge is the edge that first leaves the storage area/pocket as the panel is being “Set Up”; the trail edge is the edge that first enters the storage area/pocket when the panel is being “Stored.”





**CAUTION:** Before attempting to move panels, be sure you have read and fully understand the “Rules For Safe Operation,” contained in this manual.

Please also refer to “Sound Set Up Practices,” in this manual.

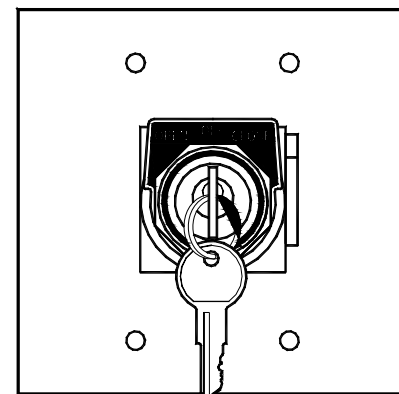
### Operating Continuously-Hinged Electric Walls

Each continuously-hinged electric wall includes, as a standard safety feature, two (2) key-operated, spring-loaded, “dead-man” control stations, as shown in the figure below, that are installed on opposite sides of each operable wall. Thus, operating the wall requires two persons, each in possession of a control key, to be standing on opposite sides of the operable wall opening, in position to view the entire area around the moving wall and to turn and hold the keys in the “open” or “close” position during operation.

#### **To operate a continuously-hinged electric wall:**

Always use common sense when operating an electric wall. Remember that the wall can weigh as much as 20,000 lbs. If you hear any unusual noise or otherwise perceive that the wall is not moving freely, discontinue operation and contact your Panelfold authorized distributor.

1. Make sure there are no obstacles along the track run or in the storage area that can block the movement of the panels.
2. If the wall utilizes a storage pocket door, open it fully.
3. With two trained staff members, standing at their respective key-control stations, turn the keys simultaneously to “CLOSE” to extend the operable wall, or to “OPEN” to retract the operable wall.
4. When the electric wall reaches its fully extended “Closed” or stacked “Opened” position the integrated Travel Limiter will automatically stop the wall in its final position.
5. Remove the control keys from the switches and store them in a secure location.
6. Close the pocket door, if any.



KEY CONTROL STATION

**SAFETY MANDATE:** For safety reasons it is mandatory that two trained staff members be present at all times while the partition is in motion.

**CAUTION:** Before operating electric walls, make sure the path of travel as well as the stack area is clear from any obstructions and that there are no persons, other than the two trained key control operators, anywhere in the vicinity of the wall that is to be moved.

**CAUTION:** While operating electric walls, both of the persons manning the key control stations should constantly and attentively keep on the lookout for any approaching obstacles or persons. If someone approaches, let go of the spring-loaded key immediately so that the wall will stop moving. Do not restart operation until all persons are safely out of the way.

**CAUTION:** If the electric wall has stopped at an intermediate point between being fully opened or fully closed, try to avoid moving by hand the panels that have not yet been aligned by the guide rollers/guide rail since doing so could unset the natural folding geometry of the panels resulting in possible damage to the partition, track, soffit and/or mechanical parts like chain, guide rollers, etc.

**CAUTION:** Never try to circumvent the proper operating techniques and safety practices described herein.

**CAUTION:** Never leave the keys in the control stations. Secure them in a safe location.

**CAUTION:** Never tamper with the electric control boxes. Breaking the tamper-proof seal will void the factory warranty. If service is required, please contact your local Panelfold authorized servicing distributor.

**ACOUSTICAL NOTE:** When setting up an electric wall, allow the wall to fully extend until the integrated Travel Limiter automatically stops the wall.

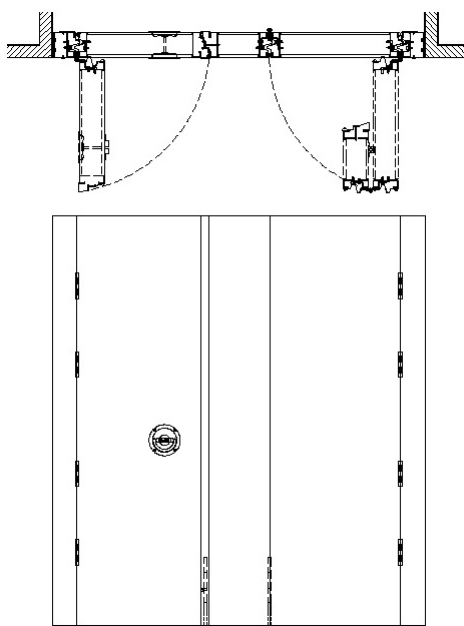
**NOTE:** Panelfold offers a wide array of optional SafetyFlex™ infrared, pressure-sensitive and other safety devices designed to further enhance safe operation of electrically operated walls. All existing Panelfold electric walls can be retrofitted with these SafetyFlex™ safety devices if they were not specified/ordered at the time of the original wall installation.

## Operating 3-Section Pocket Doors

Some Panelfold operable walls, when not in their “set up” position, are stored in a storage “pocket” (storage closet) that is closed by a Panelfold 3-section pocket door as shown below. The pocket door may be fitted with a key lock.

A 3-section pocket door is typically used when the operable wall acoustically seals to the back of the pocket. In this case, the center section of the door is designed to be left open, and the other two sections closed, when the wall is in its “set up” position.

However, in some cases, a 3-section pocket door is used when the trail panel of the operable wall is an expandable panel designed to acoustically seal against the face of the pocket door. In this case, all three sections of the door must be closed, and its floorbolt and soffit bolt must be extended, prior to extending the telescoping nose of the expandable panel. If the floor and soffit bolts are not properly engaging the holes in their receiving plates, the expandable panel will not seal tightly, from top to bottom, to the face of the pocket door, which may allow sound to stream from room to room.



3-SECTION POCKET DOOR

**⚠ CAUTION:** Before returning each panel to its storage area (storage closet), inspect the interior of the area (pocket) to be sure that nothing has been stored in the vacant area (pocket) and that there is no one in the area (pocket) that could be hit or trapped by the panel.

**⚠ CAUTION:** Before closing and/or locking pocket doors, be sure that there is no one in the pocket.

## Operating Double Pocket Doors with Slot Closures

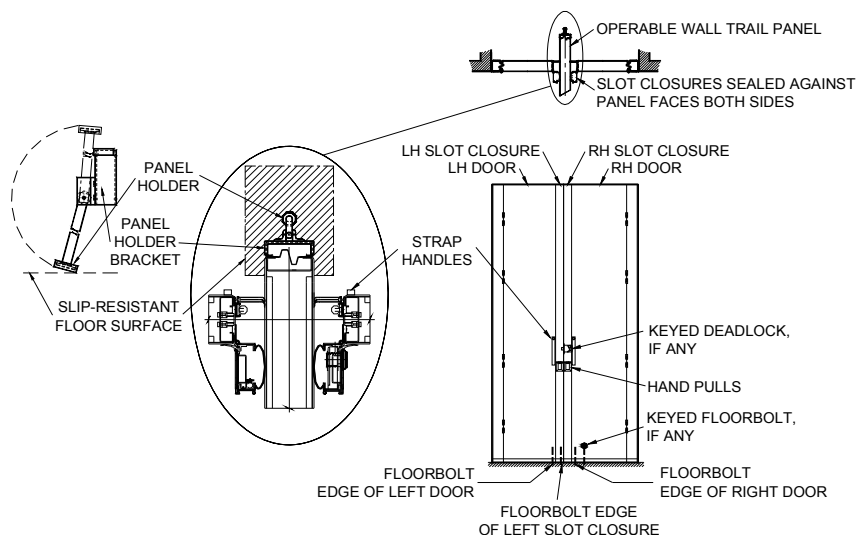
Some Panelfold operable walls, when not in their “set up” position, are stored in a storage “pocket” (storage closet) that is closed by a Panelfold pocket door. A “Double Pocket Door with Slot Closures” is designed to seal against the faces of the trail panel (last panel out of the pocket), when the wall is “set up,” as shown in the figure below. The pocket door may be fitted with a keyed deadlock and/or a keyed locking floorbolt.

**To remove an operable wall from its storage pocket and seal the pocket doors to the extended wall, proceed as follows:**

1. Unlock the keyed deadlock located on the right-side slot closure, if any, and pull open the right-side slot closure.
2. Raise the floorbolt that is on the edge of the left-side slot closure and pull open the left-side slot closure.
3. Raise the floorbolts that are on the edges of the left-side and right-side doors and open both pocket doors fully to provide access to the pocket.
4. Move the operable wall panels to their “set up” positions. The last panel out of the pocket will acoustically seal through the pocket door slot.
5. After extending the top and bottom seals of the last traveling panel, lower the panel holder that is on its trail edge until it engages the floor carpet or 6” x 10” slip-resistant surface adhered to the storage pocket floor. This will prevent the trail panel from receding into the pocket when the slot closures are pressed against the panel.
6. Close both pocket doors. To close the first door, go into the pocket and pull on the padded strap handle until the door is fully closed and the soft seal on its slot closure is engaged tightly to the face of the trail panel. Then, exit the pocket and push on the face of the second door until it is fully closed and the soft seal on its slot closure is engaged tightly to the other face of the trail panel.
7. If the pocket has an auxiliary access door, you may secure the pocket by extending the floorbolts that are on the edges of the left-side and right-side doors, and then exiting the pocket through the access door. If the pocket does not have an auxiliary door, you may secure the pocket by extending the floorbolt that is on the edge of the left-side door, and then exiting the pocket through the right-side door before extending its locking floorbolt, if any.

**To return the operable wall panels to their storage pocket and close the pocket doors, proceed as follows:**

1. Open both pocket doors fully.
2. Lift the panel holder and retract the top and bottom seals on the trail panel (the panel that had been sealed through the pocket slot) and move the panel to its stored position.
3. Move all the remaining panels into their stored positions in the storage pocket.
4. Close the left-side pocket door and extend the floorbolt that is on its edge.
5. Close the right-side pocket door and extend the floorbolt that is on its edge.
6. Close the left-side slot closure and extend the floorbolt that is on its edge.
7. Close the right-side slot closure and lock the keyed deadlock, if any.



**DOUBLE POCKET DOOR WITH SLOT CLOSURES**



**ACOUSTICAL NOTE:** To provide effective sound isolation between adjacent rooms, it is important that the slot closures' soft seals are firmly and tightly engaging both faces of the operable wall panel.



**NOTE:** If the floor is not carpeted at the position of the trail panel's holder, a 6” x 10” slip-resistant surface may have been adhered to the floor. The material may need to be replaced from time to time, if it becomes worn or loses traction. 3M™ Safety-Walk™, which is marketed for stair treads, or any similar material may be used so long as it provides traction for the panel holder. Follow the surface preparation and application instructions furnished with the 3M™ or other slip-resistant material selected.



**CAUTION:** Before returning each panel to its storage area (storage closet), inspect the interior of the area (pocket) to be sure that nothing has been stored in the vacant area (pocket) and that there is no one in the area (pocket) that could be hit or trapped by the panel.



**CAUTION:** Before closing and/or locking pocket doors, be sure that there is no one in the pocket.

## Adjusting Bottom Sweepseals

Although most panels, or panel pairs, typically have bottom clearance-type Autoseals™, Manuseals™ or floating seals, a few of the panels (such as hinged or expandable closure panels, standard pass door panels and pocket doors) may be fitted with bottom fixed sweepseals.

Each extruded vinyl sweepseal has three “fingers” that should engage the floor with a “light touch,” i.e. so that the tips of the fingers over-engage the floor, or curl, by about 1/8”.

Each sweepseal “finger” contains striations to allow the sweepseal to be easily trimmed shorter, if needed. Typically, such trimming, if any, would have been done at the time of initial installation. However, occasionally, due, for example, to building settling/deflection or installation of thicker floor covering, it may be necessary to trim the sweepseals.

### **Inspecting the sweepseals for fit:**

Before trimming a panel’s bottom sweepseals, inspect the panel in its “set up” closed position. Check to be sure that the panel’s top sweepseals are engaging the track soffit with a “light touch.”

If the top sweepseals are not engaging the soffit, this will cause a sound leak and the panel may need to be raised by adjusting its trolley suspension bolt(s). If the top sweepseals are engaging the soffit too tightly, causing the panel to be too hard to move, then the panel may need to be lowered by adjusting its trolley suspension bolt(s).

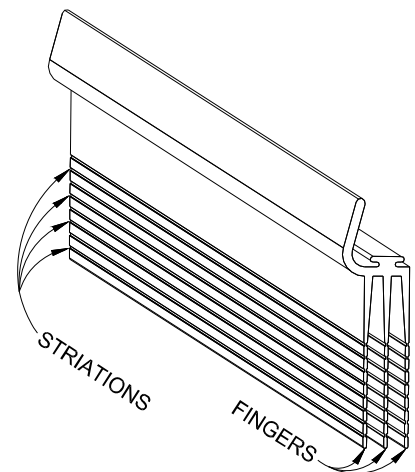
In either case, the bottom sweepseals should not be trimmed unless the panel is plumb and the top sweepseals are properly engaging the soffit with a “light touch.”

**▲ CAUTION:** Adjustment of trolley suspension bolts should only be performed by an authorized Panelfold service technician. (See “Rules for Safe operation” and “Suspension Locking Plates”).

### **Trimming the sweepseals:**

If the panel is plumb, the top seal engagement is correct, and the bottom seal is over-engaging the floor at its “set up,” in-use position, then the bottom sweepseals may be trimmed as follows:

1. Using scissors or a knife, cut an approximately 1/2” long, horizontal slit into one of the striations (thin grooves) at one end of one of the three sweepseal “fingers.” Then, grasp the slit portion and pull it, to “strip off” the rest of it along the full length of the sweepseal.
2. Repeat step 1 for each sweepseal “finger” that needs to be shortened, until each finger engages the floor with a “light touch.”



SWEEPSEAL

## Adjusting Bottom Floating Seals

Panelfold electrically operated walls typically have adjustable “floating” seals on the bottoms of the panels. These seals consist of extruded vinyl, three-finger sweepseals attached to a metal channel that is spring-loaded downward in order to maintain the sweepseals in constant engagement with the floor surface while allowing the seals to ride up and down (float) over high and low spots in the floor as the electric wall is operated between its open and closed positions.

Each floating seal can be adjusted to limit its maximum extension so that its sweepseals will engage the floor surface with a “light touch,” i.e. so that the tips of the sweepseal fingers will over-engage the floor, or curl, about 1/8”.

Typically, the adjustment of the floating seal travel limiters would have been done at the time of initial installation. However, occasionally, due for example to building settling/deflection or installation of thicker floor covering, it may be necessary to re-adjust the seals.

### **Inspecting the seals for fit:**

Before adjusting a panel’s bottom floating seals, inspect the panel in its “set up” closed position. Check to be sure that the panel’s top sweepseals are engaging the track soffit with a “light touch.”

If the top sweepseals are not engaging the soffit, this will cause a sound leak, and the panel may need to be raised by adjusting its trolley suspension bolt. If the top sweepseals are engaging the soffit too tightly, then the panel may need to be lowered by adjusting its trolley suspension bolt.

In either case, the bottom floating seals should not be adjusted unless the panel is plumb and the top sweepseals are properly engaging the soffit with a “light touch.”

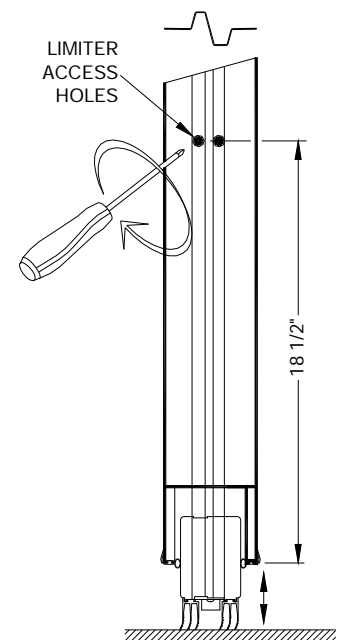


**CAUTION:** Adjustment of trolley suspension bolts should only be performed by an authorized Panelfold service technician. (See “Rules for Safe operation” and “Suspension Locking Plates”).

### **Adjusting the floating seals:**

The floating seals may be re-adjusted with the use of a no. 2 phillips screwdriver, as follows:

1. Close the operable wall fully, so that all of its panels are in their “set up” positions.
2. Inspect the floating seal on the bottom of each panel to determine whether it is engaging the floor with a “light touch” at its set up position. If it is over-engaging the floor (sweepseals curled up by more than 1/8”), it will need to be adjusted upward. If it is under-engaging (not touching) the floor, it will need to be adjusted downward.
3. For each seal that will need to be adjusted, make note of its panel no. (location) and the amount by which it will need to be adjusted (Example: “Panel no. 5 upward 1/4”).
4. After you have recorded the above information for every panel that is to be adjusted, open the operable wall fully so that all of its panels are in their face-to-face, stacked, stored position.
5. Starting with one of the panels to be adjusted, find the 1/2” diameter holes that are located on one edge of the panel approximately 18” above the bottom of the panel.
6. With one hand, hold tightly onto the end of the bottom seal channel, and, with the other hand, insert a no. 2 Phillips screwdriver into the hole on the edge of the panel until it engages the screw that is located behind the hole. Turn the screws counterclockwise slightly just enough to loosen them. (Do not remove them).
7. While still grasping the end of the bottom seal tightly, raise or lower it by the amount that it is to be adjusted and, using the screwdriver in the other hand, turn the screws clockwise to retighten them.
8. Walk around to the opposite edge of the same panel and repeat the process, to adjust the other end of the same bottom seal.
9. Repeat steps 5-8 for each floating seal that is to be adjusted.
10. After all the adjustments have been made, close the operable wall fully so that all of its panels are in their “set up” positions.
11. Re-inspect each floating seal to be sure that it is now engaging the floor with a “light touch.”



**ADJUSTING THE FLOATING  
SEAL EXTENSION LIMITER**

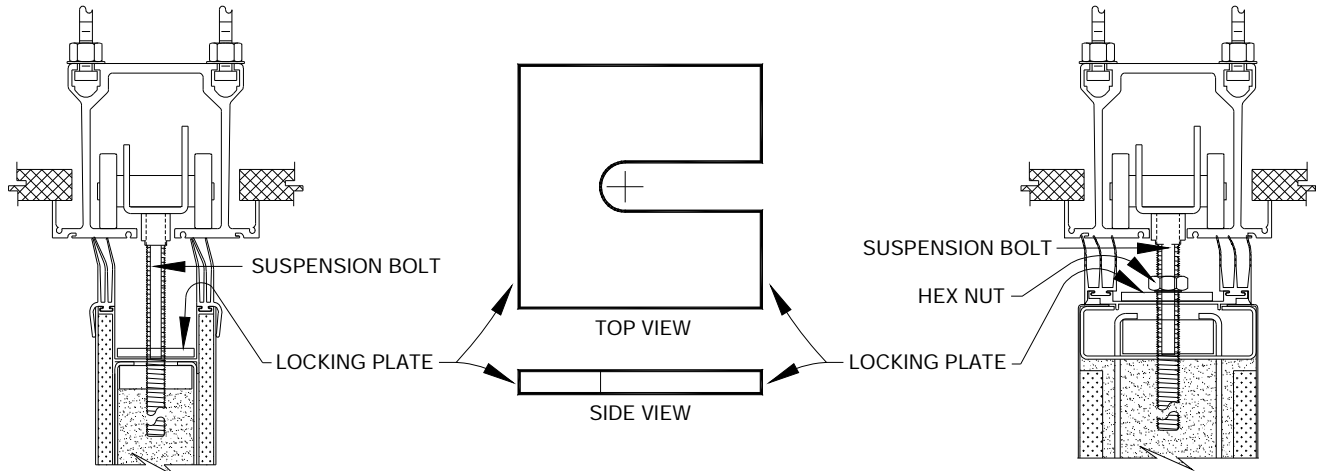


**NOTE:** If you do not grasp the bottom floating seal firmly while loosening the adjustment screw, you may lose track of the position it was in prior to adjustment. To avoid this, you may find it helpful to temporarily measure or mark its pre-adjustment position relative to the bottom of the panel or the bottom of the panel’s edge astragal.

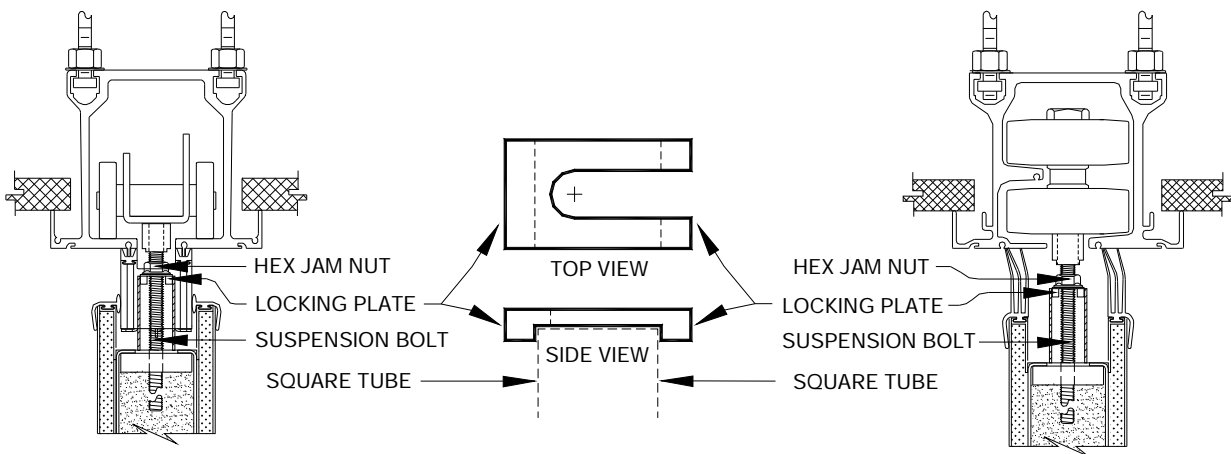


### Suspension Locking Plates

Panelfold operable wall panels are suspended from trolleys that are attached to the panel by a threaded suspension bolt that is fitted with a locking plate of one of the types shown below.



LOCKING PLATE INSTALLED ON PANEL THAT HAS TOP SWEEPSEALS



LOCKING PLATE INSTALLED ON PANEL THAT HAS A TOP OPERABLE SEAL AND/OR THAT HAS MULTI-DIRECTIONAL WHEELS



**CAUTION:** LOCKING PLATES MUST NEVER BE REMOVED, except by an authorized Panelfold service technician, and, then, only momentarily while adjusting the elevation or plumb of a panel. Moving a panel with a locking plate removed may result in the suspension bolt unthreading from the panel, causing the panel to fall.

## GENERAL MAINTENANCE

### Maintaining Panel Surfaces

#### Vinyl Wall Covering, High Pressure Laminate and Wood Veneer

- To clean, dampen a cloth with warm, soapy water and scrub the area to be cleaned. Rinse and dry the surface afterward. If stains persist, try a non-solvent, foaming cleaner or other mild spray cleaner. Avoid using abrasive cleaners.

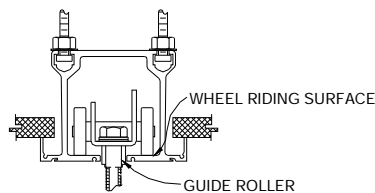
#### Fabric and Carpet

- These wall coverings will stay attractive and serviceable with regular vacuuming.
- Carefully blot liquid spills immediately with a dry, white, absorbent cloth or paper towel. Avoid scrubbing the area. This may distort the pile. To prevent spreading, work from the edges of the stain to the center.
- Most stains will disappear when treated with a mild detergent. After the stain has been removed, rinse with a mist sprayer of cold water and blot until dry.
- For solids, allow to dry, remove with a wet cloth, gently brush and vacuum.
- If you elect to use a cleaning solvent or spot removal agent, test in an inconspicuous area to make certain the solution does not alter color, damage fiber or attack the contact adhesive that was used to laminate the wall carpeting to the panel faces.
- Immediate attention to any spill will increase the probability of removal.
- Repeating the steps: wet-wipe-rinse-blot dry, may be required to fully extract contaminant.
- For most cleaners, rinse with a mist sprayer of cold water to prevent residue of cleaning solution from attracting future soil.

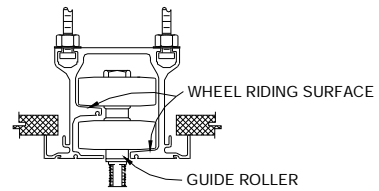
### Maintaining Track and Trolleys

The inside wheel riding surfaces of the operable wall tracks (and track diversion blades used with Pre-Programmed™ models, if any) should be cleaned and lubricated periodically. We suggest once a year under normal circumstances. If used in an extremely dirty environment or used heavily, and, if panels become increasingly difficult to move, check to see if more frequent cleaning and lubrication will be necessary. We recommend a clear, odorless, lithium-based grease such as NGL1 - Grade 1.5 MOBILITH - SCH-PM.

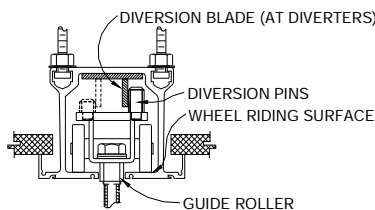
The trolley bearings do not need to be cleaned or lubricated under normal circumstances. However, the guide rollers on the bottoms of the trolleys (and the diversion rollers on the tops and/or bottoms of the trolleys used with Pre-Programmed™ models), as shown in the images below, should be lubricated using WD-40 or similar to avoid squeaking or rough operation.



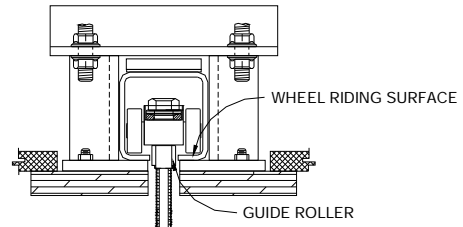
TYPE 7/8 TRACK



TYPE 9 TRACK WITH MULTI-DIRECTIONAL WHEELS



TYPE 7/8 TRACK WITH  
PRE-PROGRAMMED™ DIVERSION PINS



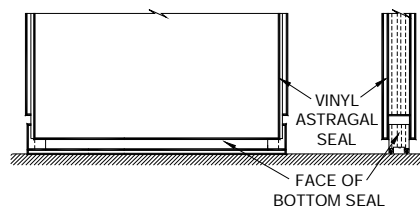
TYPE 5 TRACK

### Maintaining Hinges

Panel, pass door and pocket door hinge pins, if any, should be checked and lubricated periodically using lithium-based grease, WD-40 or similar. Take care to protect panel faces during the lubrication process.

### Maintaining Seals

The bronze-painted steel faces of the top and bottom operable seals, the flexible vinyl sweepseals on the bottoms of the pass doors and the vertical flexible vinyl seals on the panel edge astragals should be periodically cleaned by wiping them with a silicone impregnated cloth.



CLEANING THE SEALS

## WORK SURFACES MAINTENANCE

### Maintaining Markerboard Surfaces

For Panelfold operable walls fitted with dry erase markerboards, **use only dry erase markers**. Never use a permanent marker or it will cause permanent damage. The following care and maintenance information is quoted from the web site, [www.cleanmyboard.com](http://www.cleanmyboard.com):

#### **Care and Maintenance:**

- For the initial cleaning, wipe your board with a clean cloth moistened by a liquid cleanser.
- Rinse with clear water. This step is simple but very important.
- Wipe dry with a clean cloth.
- If your board is used daily, the cleaning should be performed at least 2 to 3 times a week.

More thorough cleaning may be required if writing is left on the board for more than 2 days.

#### **Removing Permanent Marker:**

- Moisten a clean, dry cloth with isopropyl alcohol.
- Wipe the board in a circular motion to loosen marker residue.
- Rinse with clear water.
- Dry the board with a clean cloth.
- Repeat these steps as often as necessary to remove all residues.

#### **Removing Crayon and Tape:**

- Dampen a clean, dry cloth with water.
- Apply a small amount of non-abrasive cleanser, such as SoftScrub without bleach, onto the cloth. For best results, follow non-abrasive cleaner manufacturer's instructions found on the product label.
- Begin cleaning a small, manageable area using a back and forth horizontal motion. Use gentle pressure as if you were cleaning a window.
- Wipe off all residues with a dry cloth.
- Rinse well with clear water. Please note that the rinsing and drying steps are very important.
- Wipe dry with a clean cloth.
- Follow the same procedure for the remainder of the board.

#### ***Using Magnets***

With the use of small magnets your markerboards and/or chalkboards become bulletin and display boards.

### Maintaining Chalkboard Surfaces

For Panelfold operable walls fitted with chalkboards, we strongly recommend white chalk as opposed to yellow or other colored chalks. For special purposes, colored chalk can be used, but the added pigments in this chalk can make it more difficult to erase and are messier. A high grade chalk (95% chalk with 5% binder) will give better results than a 50% chalk content or chalks made of plaster or gypsum. Inferior chalk or low content chalk may permanently mark the chalkboard.

For optimal performance of your chalkboards, a simple "break-in" procedure is recommended. This improves the surface's write-ability and erase-ability. Just chalk all over the face of the chalk board using the flat side of a piece of chalk then erase. Now the chalkboard surface has been "broken-in."

Periodically cleaning the board with a clean cloth moistened with water, drying the board with another lint-free cloth, then "breaking-in" the board again with chalk will help keep your chalkboard clean and manageable through the years.

# TWO YEAR LIMITED WARRANTY

Subject to the terms and conditions set forth below, Panelfold, Inc. warrants each new Moduflex® operable wall and accessory, each new PrimeSpacer® relocatable wall and accessory, and each new Scale/8®, Scale/12®, Sonicwal® and Fabricwal® folding partition and accessory to be free from defects in material and workmanship under normal use and service. Panelfold assumes no obligation to correct defects caused by improper installation or unreasonable use (including without limitation physical abuse or failure to provide reasonable and necessary maintenance). Panelfold's obligations under the warranty are limited to the repair or, at Panelfold's option, replacement, free of charge, of any defective part. This remedy is the purchaser's exclusive remedy for breach of warranty. Unless otherwise specifically agreed in writing by Panelfold, the duration of this warranty is two (2) years from the date of shipment from Panelfold. If the purchaser discovers within this period a defect in material or workmanship, it must promptly notify Panelfold in writing and must include a statement as to the nature of the asserted defect. In no event shall such notification be received by Panelfold later than 25 months from the date of shipment from Panelfold. Panelfold may, at its option, require that the defective part be returned to the factory at the address set forth below, correctly packaged or crated for safe shipment, and with transportation charges prepaid by the party returning the product. No product covered by the warranty may be returned to the factory without prior written authorization from the factory. Panelfold accepts no responsibility or liability for products returned without such authorization. Requests for such authorization and authorized return shipments should be addressed to: Panelfold, Inc., 10700 N.W. 36th Avenue, Miami, Florida 33167, and must include the name and address of the party to whom the repaired part is to be returned.

## DISCLAIMER OF WARRANTY

EXCEPT FOR THE EXPRESS WARRANTY PROVIDED HEREIN, PANELFOLD DISCLAIMS ALL OTHER WARRANTIES, EXPRESS OR IMPLIED, INCLUDING, BUT NOT LIMITED TO, THE IMPLIED WARRANTIES OF MERCHANTABILITY AND FITNESS FOR A PARTICULAR PURPOSE. PANELFOLD UNDERTAKES NO RESPONSIBILITY FOR THE QUALITY OF THE GOODS EXCEPT AS OTHERWISE PROVIDED IN THIS LIMITED WARRANTY. PANELFOLD ASSUMES NO RESPONSIBILITY THAT THE GOODS WILL BE FIT FOR ANY PARTICULAR PURPOSE FOR WHICH YOU MAY BE BUYING THESE GOODS, EXCEPT AS OTHERWISE PROVIDED IN THIS LIMITED WARRANTY.

## LIMITATION OF LIABILITY

THE LIABILITY OF PANELFOLD, IF ANY, AND ANY PURCHASER'S SOLE AND EXCLUSIVE REMEDY FOR DAMAGES FOR ANY CLAIM OF ANY KIND WHATSOEVER, REGARDLESS OF THE LEGAL THEORY, SHALL NOT BE GREATER THAN THE ACTUAL PURCHASE PRICE PAID TO PANELFOLD FOR THE PRODUCT WITH RESPECT TO WHICH SUCH CLAIM IS MADE. IN NO EVENT SHALL PANELFOLD BE LIABLE FOR ANY SPECIAL, INDIRECT, INCIDENTAL, OR CONSEQUENTIAL DAMAGES OF ANY KIND INCLUDING, BUT NOT LIMITED TO, LOST PROFITS, BASED ON ANY LEGAL THEORY.

## NO OTHER WARRANTY

NO PARTY OTHER THAN AN OFFICER OF PANELFOLD IS AUTHORIZED TO MAKE ANY ADDITIONAL OR OTHER WARRANTY ON BEHALF OF PANELFOLD, INC. ON THESE PRODUCTS.

# Panelfold®