

# Criterion®

*Rigid Vinyl Color Selections*



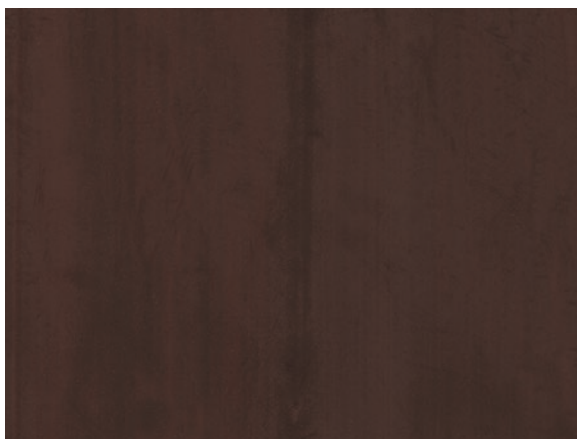
WHITE SWAN



GRAY SAND



OAK SAND



WALNUT BROWN



SILVER CLOUD



*PLEASE NOTE: Customers should always obtain the actual color selections card or samples before specifying as computer monitors and color printers vary in their ability to display color.*

# Criterion®

*Rigid Vinyl Color Selections*

## SCOPE

These rigid vinyl color selections include three solid and two wood tone color finishes available on Panelfold Criterion folding doors. The swatches represent the actual material used to extrude Criterion folding door panels.

## PRODUCT DESCRIPTION

Criterion folding doors feature four-inch-wide extruded rigid vinyl panels interconnected by rigid self-mating hinges formed as an integral part of each door panel. These economical, lightweight and durable doors are designed to meet the requirements of a broad spectrum of construction projects.

Criterion doors are also:

- Fade resistant
- Moisture resistant
- Flame resistant
- So light in weight that they may be suspended from acoustical tile ceilings

## MAINTENANCE

Criterion doors may be cleaned with a damp sponge or cloth.



**OPERABLE PARTITIONS • ACCORDION PARTITIONS  
PORTABLE PARTITIONS • ACOUSTICAL PANELS • FOLDING DOORS**

Panelfold, Inc. PO Box 680130 Miami, Florida 33168 • Phone: 305-688-3501 • FAX: 305-688-0185  
E-Mail: [sales@panelfold.com](mailto:sales@panelfold.com) • Internet: [www.panelfold.com](http://www.panelfold.com)

See our other color selections cards for textured vinyls, woven fabrics, wall carpeting, wood veneers and high pressure laminates available for use on other Panelfold Innovative Space Division Systems™.