

Panelfold[®] Pre-Programmed™ Diverter System

Panelfold continues to have the most advanced and versatile programmed track and carrier technology in the world.

There is a major difference in ease of operation and “user-friendliness” between multi-directional track systems and Pre-Programmed™ track systems. In multi-directional systems, each time that each carrier of each panel is required to turn at an intersection, the movement of the panel must be stopped, the carrier must be positioned at the mid-point of the intersection and then the movement of the panel must be restarted.

In Pre-Programmed™ track systems, which have conventional radial-type ball-bearing wheels rolling freely through curves and radiused diverters, the momentum of the panel carries it through a turn, making it unnecessary to stop and restart panel movement. Furthermore, panels automatically sort into their correct stacking bays, find their correct use location and cannot get turned around or mixed up.

The advantages of Pre-Programmed™ track systems, which include reduced “set-up” and “take-down” time as well as less operator fatigue, result in greater owner satisfaction every time.

How it works...

1. Each carrier (there are two carriers per panel) has Guide Pins.
2. Each track diverter has Guide Blades.
3. The Guide Blades can be located on either side of the track gap, and can be either curved or straight.
4. The Guide Blades force the carrier to turn left, to turn right, or to go straight through, by guiding the guide pins of the carrier.

Side Stack

One of the most common uses for the diverter system is to provide side stacking. A side stack is a stack in which the panels when stacked are fully or partially offset to one or both sides of the main track.

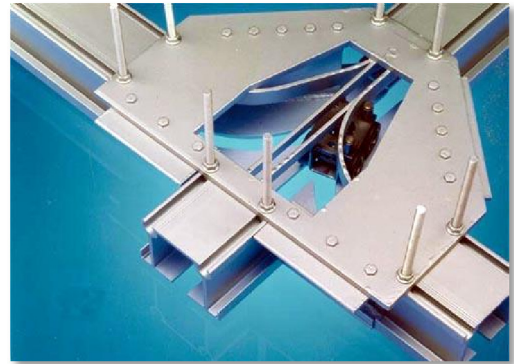
Remote Stack

Another common use. A remote stack is a stack in which the panels are not stacked at an end of an opening that it is intended to fill. The wall usually travels along a travel track from the opening(s) where it is used to its remote stack location.

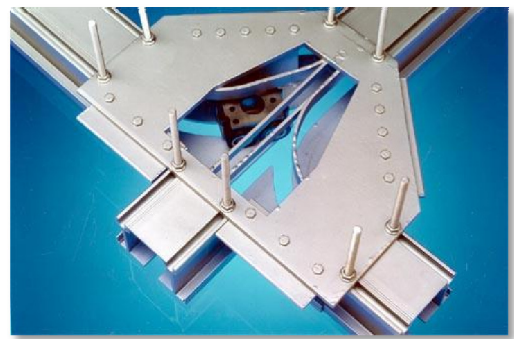
Complex Layouts and Stacks

Even the most complex layouts are enhanced with the free-flowing and self-sorting nature of Pre-Programmed™ panels. Panelfold’s Pre-Programmed technology has been around since the 1960’s and continued advents have enabled it to increase to infinity the number of possible diversion decisions that can be made by Pre-Programmed technology. There is no individual panel application that cannot be Pre-Programmed.

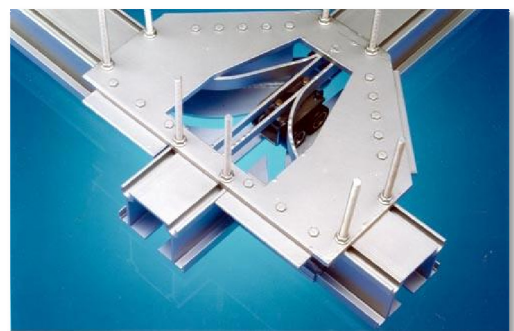
Please see the following pages for examples of side stacks, remote stacks and a few complex layouts.



Left Turn



Right Turn



Straight Through

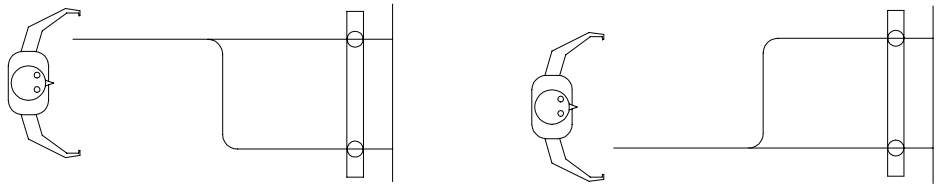
DIVERTER TECHNOLOGY

1) STACKING

HAND (RIGHT;LEFT) OF STACK DETERMINED BY FACING STACK OR "MOUTH" OF DIVERTER.

ILLUSTRATION #1  FACING THIS DIRECTION

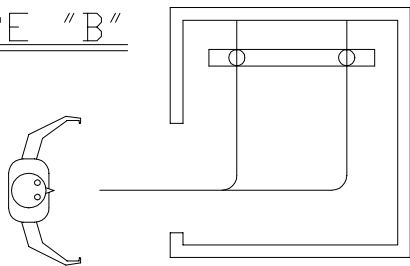
TYPE "A"



DIVERTER } RIGHT HAND STACK
STACK } 1 RIGHT HAND DIVERTER
ASSEMBLY } 1 CURVE

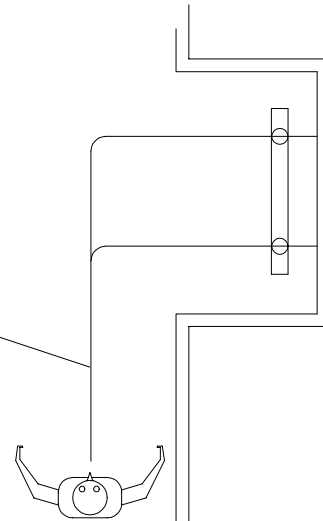
LEFT HAND STACK
1 LEFT HAND DIVERTER
1 CURVE

TYPE "B"



LEFT HAND STACK
1 LEFT HAND DIVERTER
1 CURVE

TRAVEL TRACK



REMOTE STACKING

ILLUSTRATION #2

 PARTITION EXTENDED

THIS IS A TYPE "B" RIGHT HAND STACK,
WITH AN EXTRA CURVE.

1 RIGHT HAND DIVERTER
1 CURVE

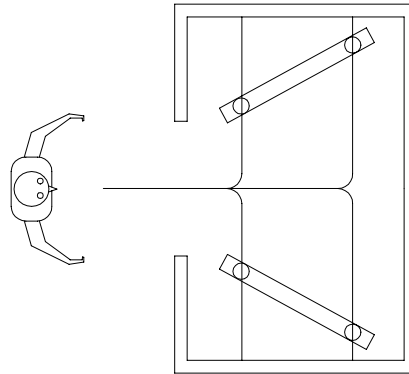
THIS COULD ALSO BE DONE WITH A TYPE "A"
OR TYPE "H" STACK AND ADDITIONAL CURVES FOR
MORE COMPLEX LAYOUTS.

DIVERTER TECHNOLOGY

(STACKING: CONT.)

ILLUSTRATION #3

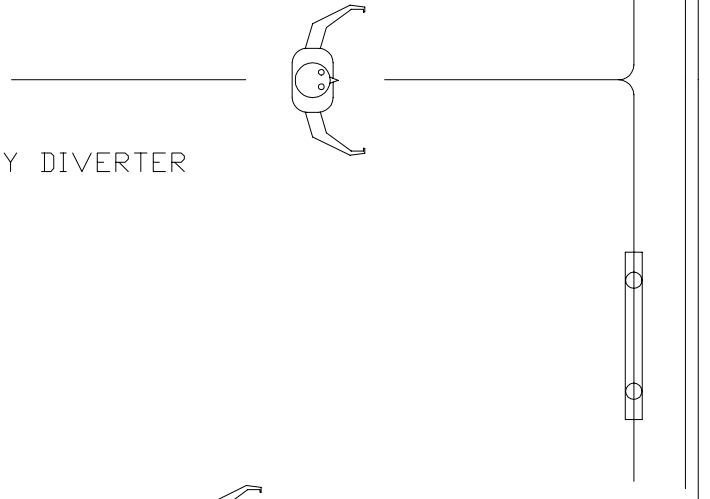
TYPE "H"



1 3-WAY DIVERTER
1 2-WAY DIVERTER

ILLUSTRATION #4

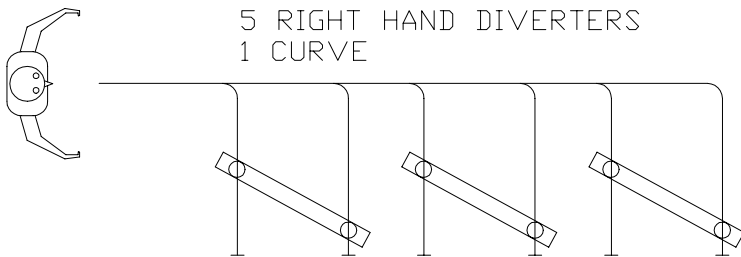
IN-LINE STACK



1 2-WAY DIVERTER

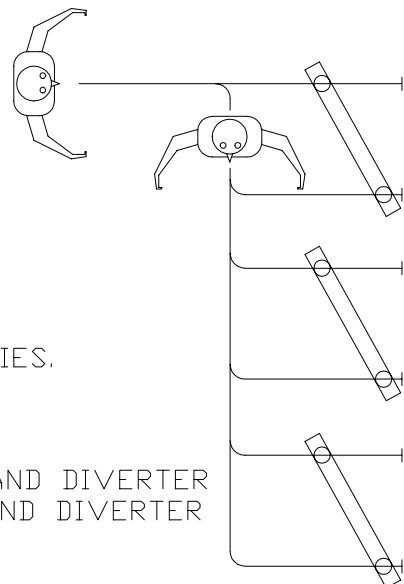
ILLUSTRATION #5

IN-LINE STACK



5 RIGHT HAND DIVERTERS
1 CURVE

UP TO 3 STACK AREAS FOR COMBINATIONS
OF TYPE "A" AND TYPE "B" STACK ASSEMBLIES.



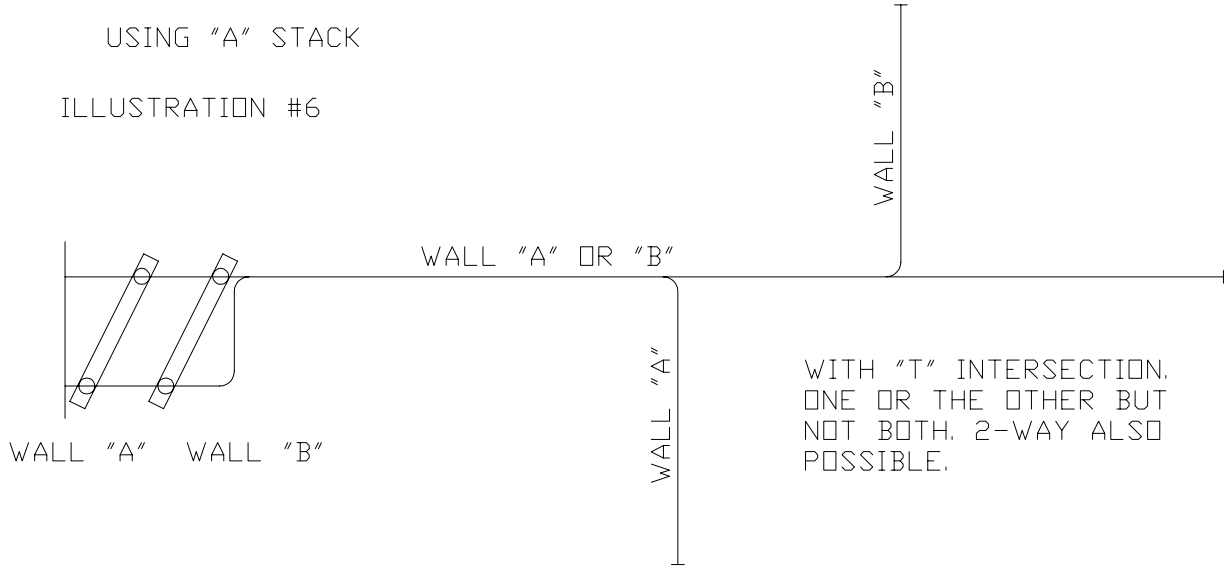
1 RIGHT HAND DIVERTER
4 LEFT HAND DIVERTER
1 CURVE

DIVERTER TECHNOLOGY

2. COMPLEX LAYOUTS

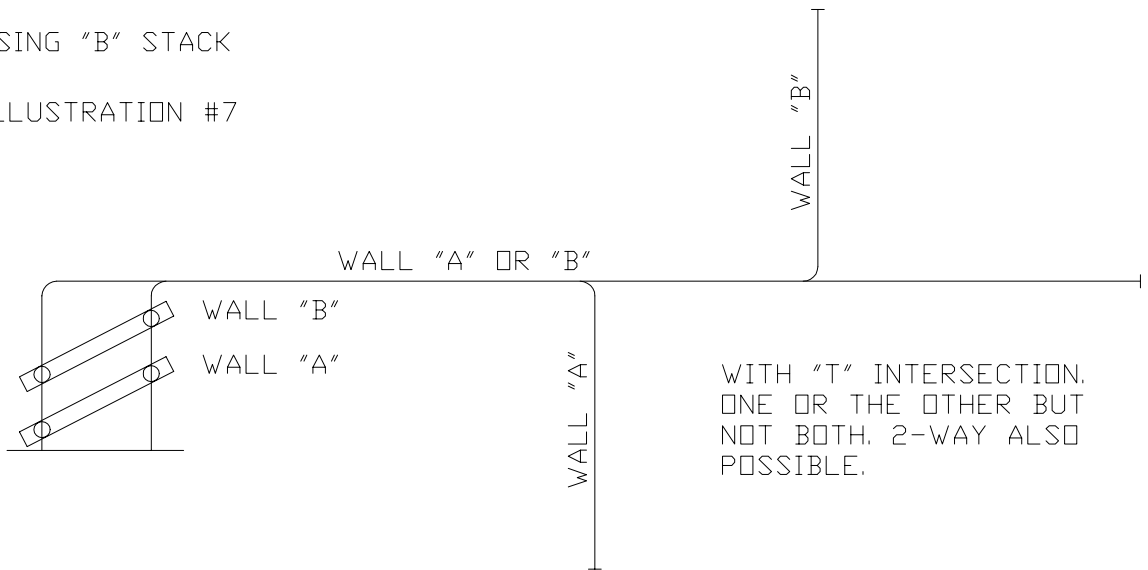
USING "A" STACK

ILLUSTRATION #6



USING "B" STACK

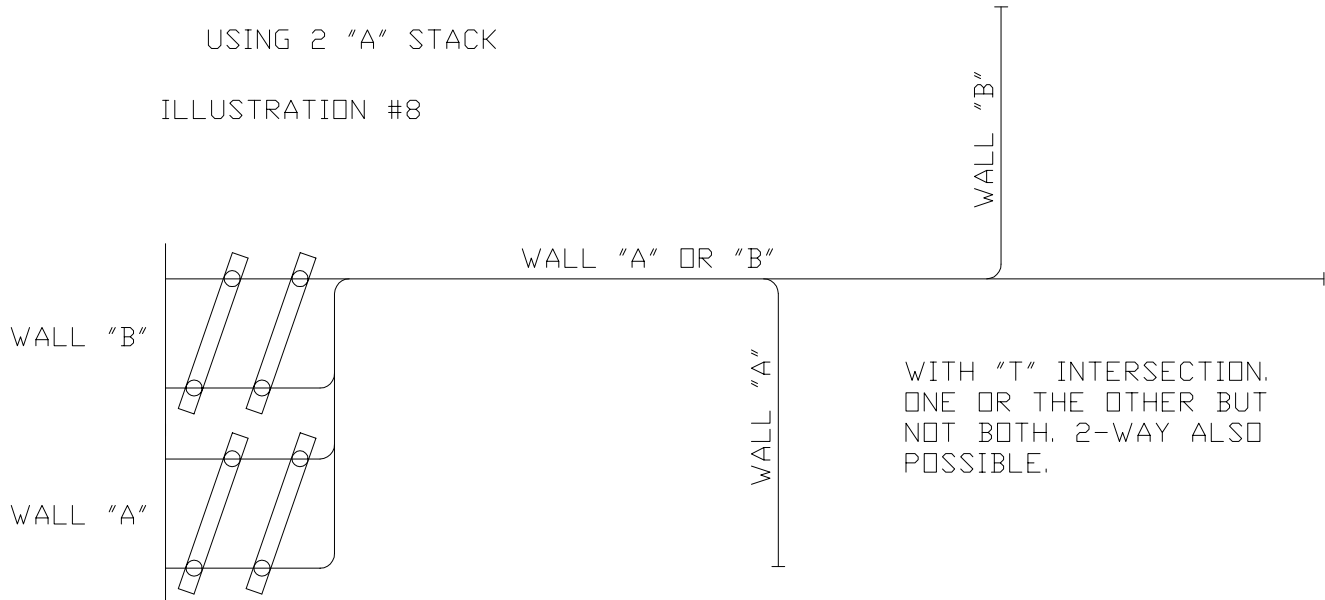
ILLUSTRATION #7



DIVERTER TECHNOLOGY (COMPLEX LAYOUTS: CONT.)

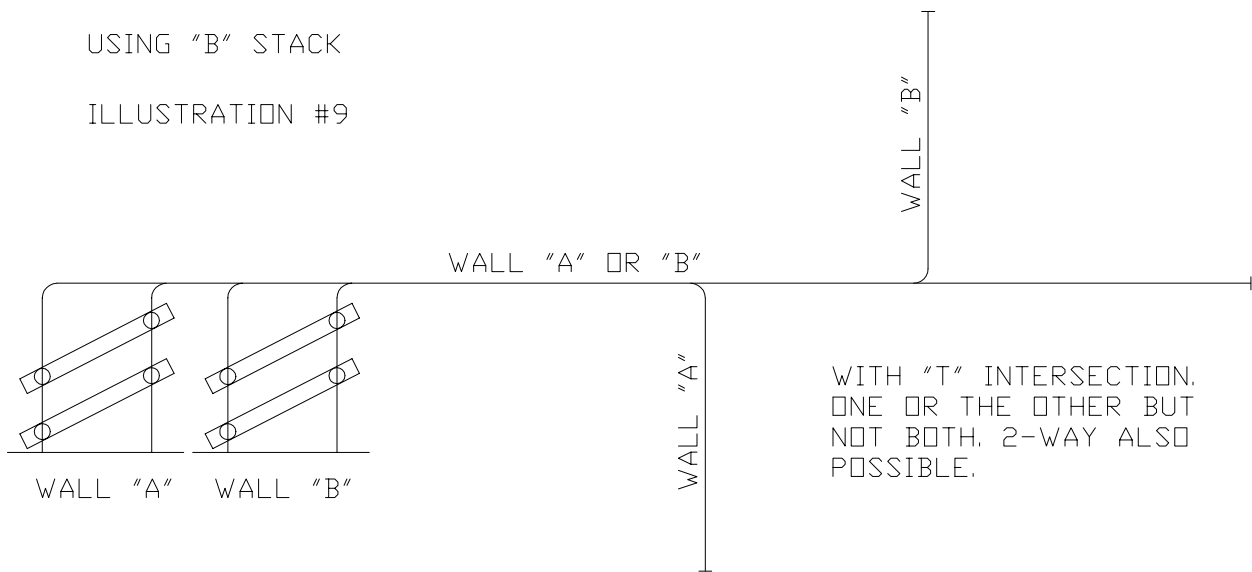
USING 2 "A" STACK

ILLUSTRATION #8



USING "B" STACK

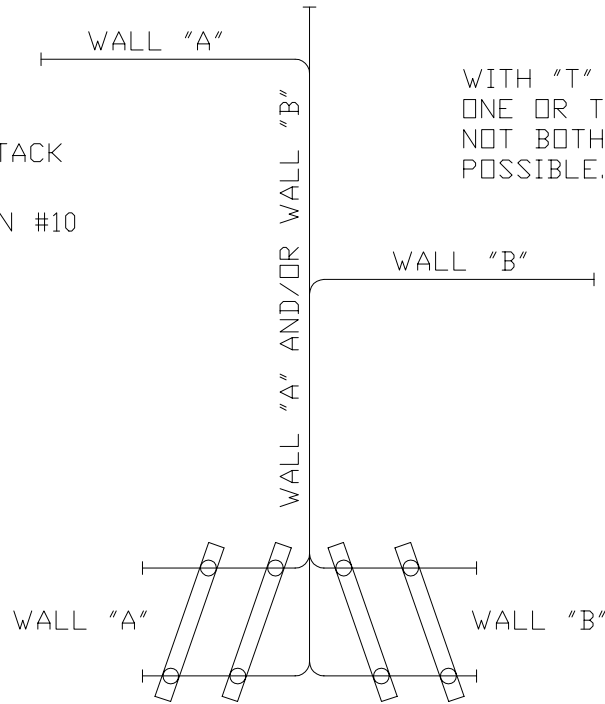
ILLUSTRATION #9



DIVERTER TECHNOLOGY

(COMPLEX LAYOUTS: CONT.)

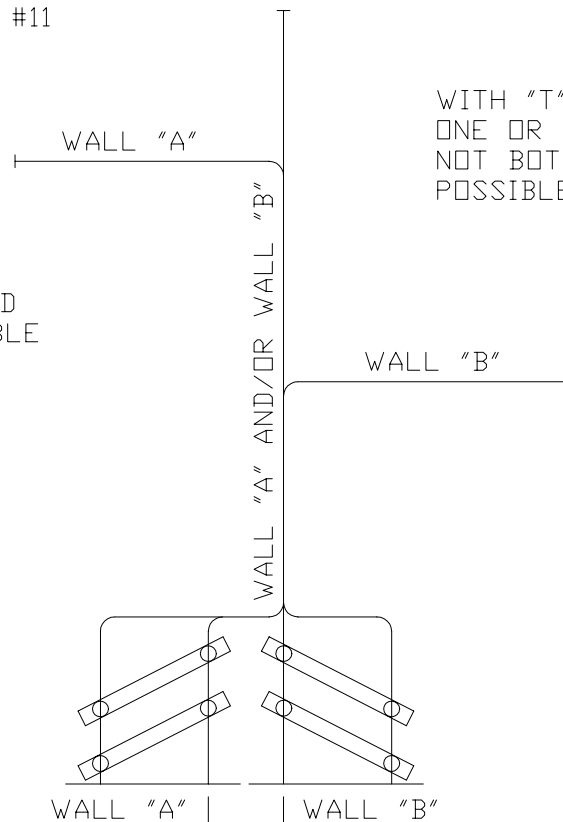
USING "H" STACK
ILLUSTRATION #10



WITH "T" INTERSECTION,
ONE OR THE OTHER BUT
NOT BOTH. 2-WAY ALSO
POSSIBLE.

USING "A" STACK WITH 3-WAY DIVERTER

ILLUSTRATION #11



WITH "T" INTERSECTION,
ONE OR THE OTHER BUT
NOT BOTH. 2-WAY ALSO
POSSIBLE.

OPPOSITE HAND
ALSO AVAILABLE

WITHOUT AUTOMATIC BOTTOM SEALS — 1'-8"
WITH AUTOMATIC BOTTOM SEALS — 2'-3"
WITH 6" RADIUS DIVERTERS TYPICAL